



Special Populations: Student Success in CTE Courses

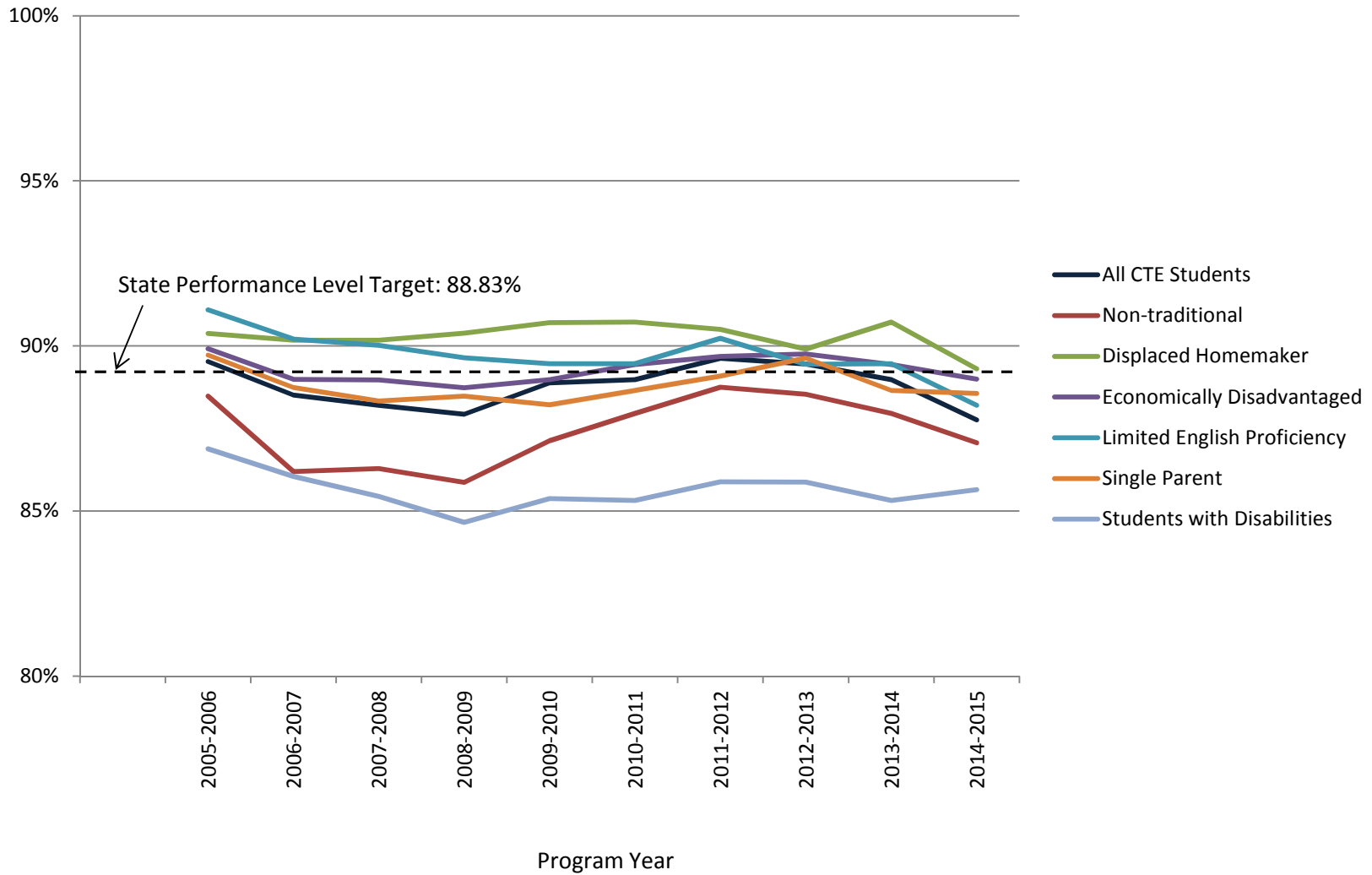
All TOP Codes Combined

Core Indicators 1-5b

Program Years 2005/06 – 2014/15

Perkins IV Core Indicator 1P1 - All TOP Codes

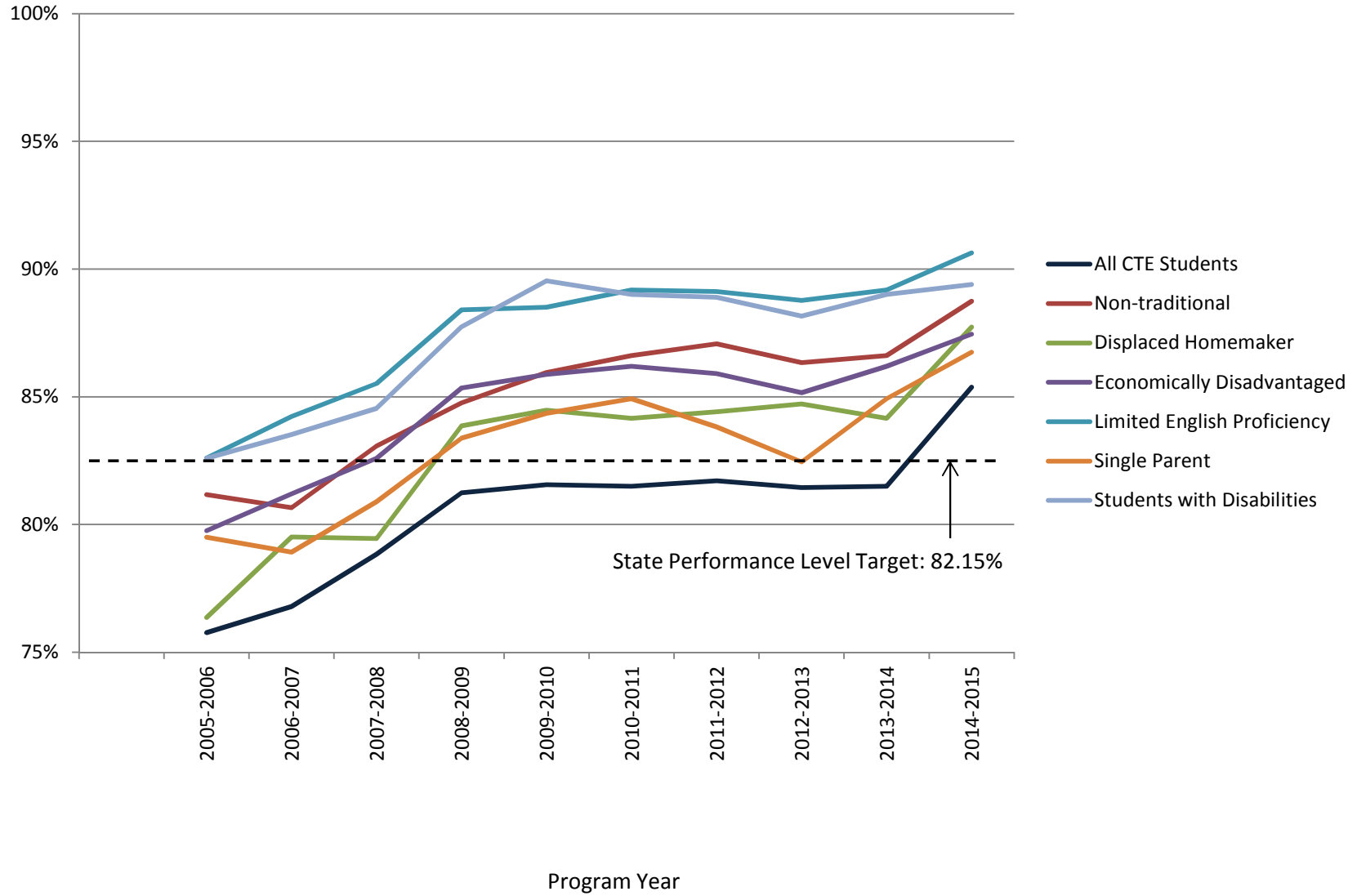
CTE concentrators earning a GPA of 2.0 or higher in CTE courses to assess technical skill attainment



CTE Concentrators are defined as students who has successfully completed a minimum threshold of 12 or more units of related coursework in a vocational or technical program area (defined as a two-digit TOP code) within the previous specified time period with at least one of the courses coded with a SAM priority code of A-C. The amount of time to reach this threshold of enrollments is limited to the most recent three years.

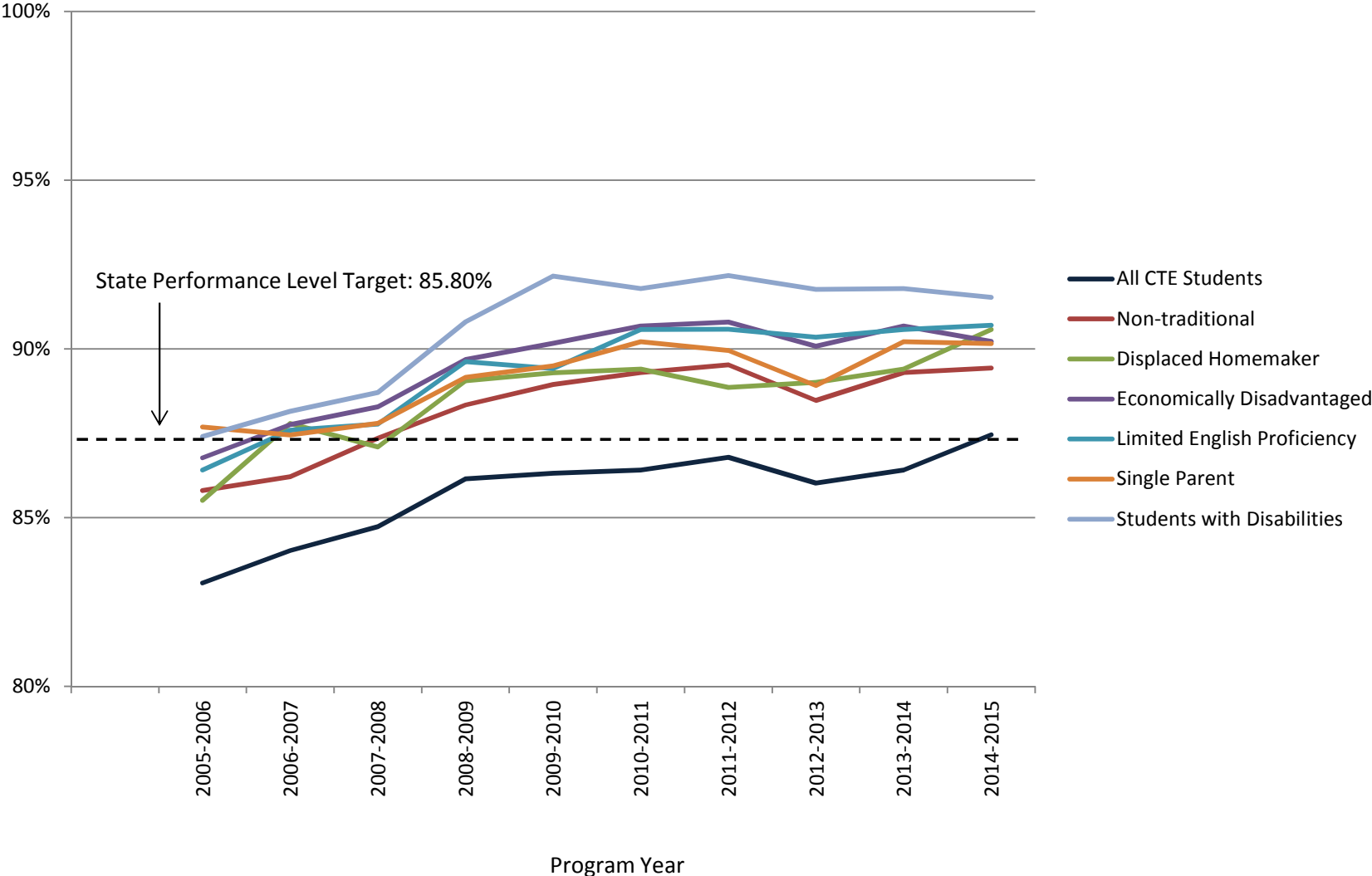
Perkins IV Core Indicator 2P1 - All TOP Codes

Student attainment of an industry-recognized credential, a certificate, or a degree, or are classified as Transfer Prepared



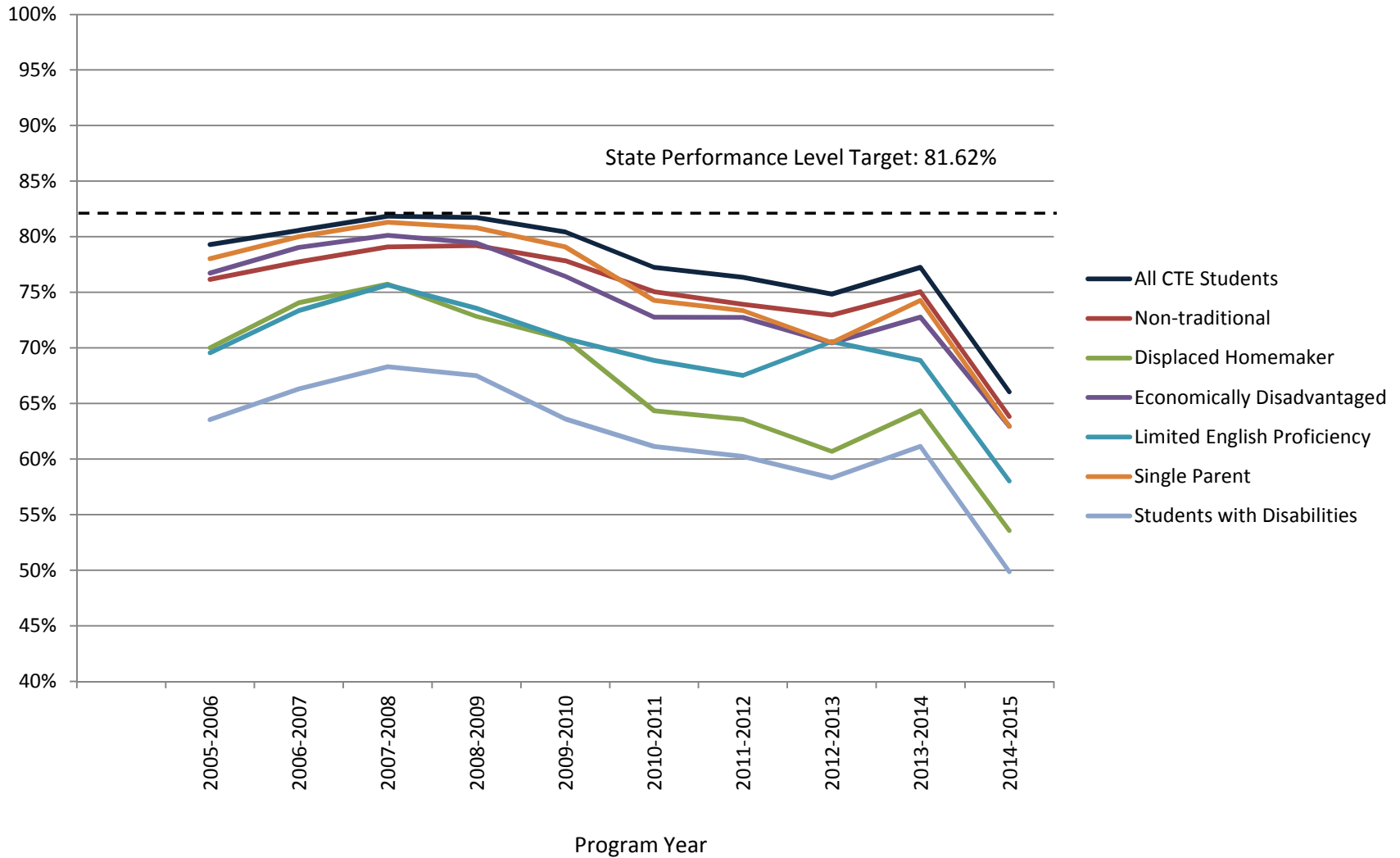
Perkins IV Core Indicator 3P1 - All TOP Codes

Students who successfully completed a minimum "threshold of 12 or more units of related coursework" in a CTE program area and 1) persisted in education at the community college level or 2) transferred to a 4 year institution



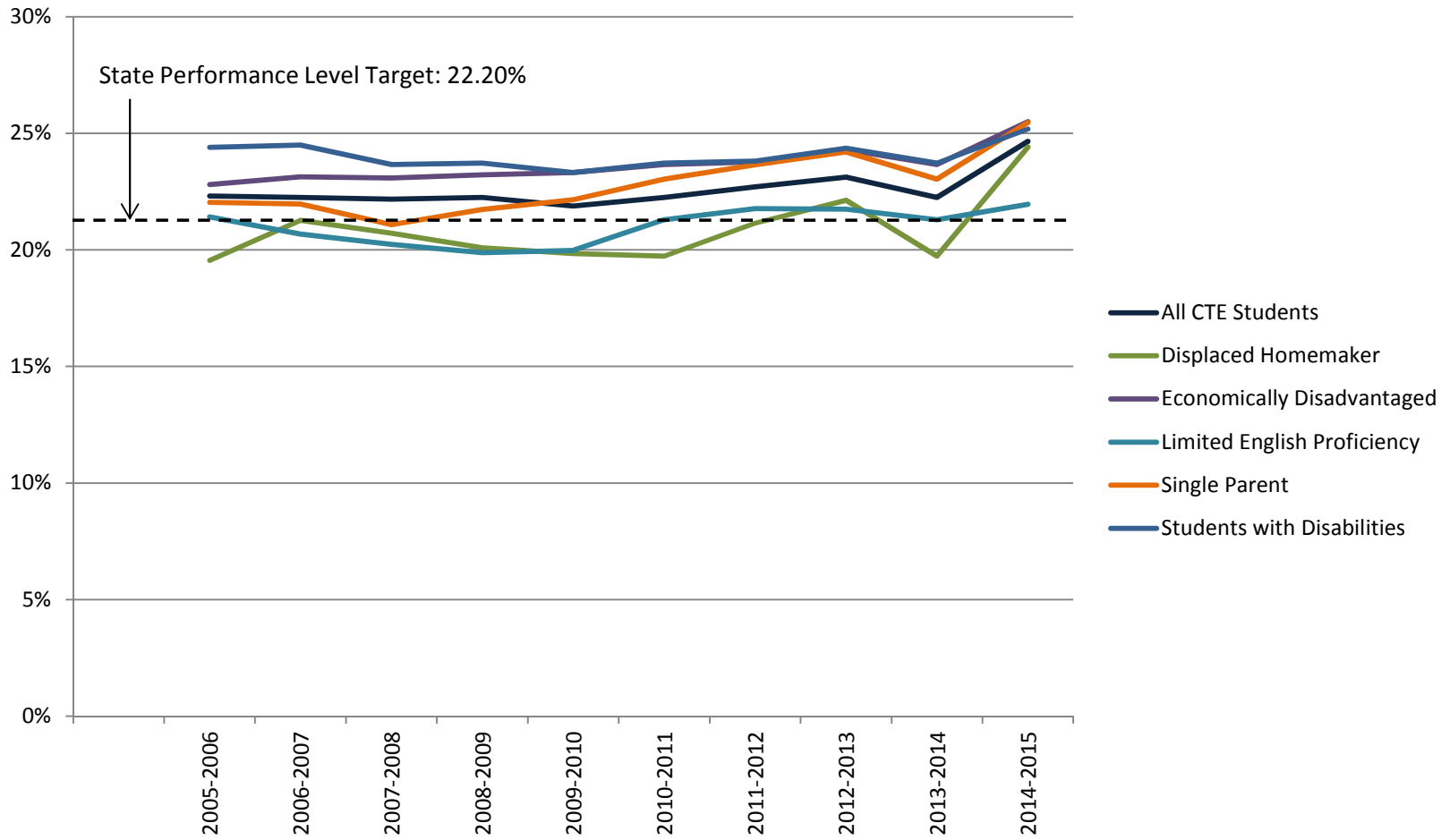
Perkins IV Core Indicator 4P1 - All TOP Codes

Student placement in military service or apprenticeship programs or placement or retention in employment, including placement in high skill, high wage, or high demand occupations or professions



Perkins IV Core Indicator 5P1 – All TOP Codes

Nontraditional (underrepresented gender) student enrollment in, and completion of, CTE programs



Perkins IV Core Indicator 5P2 – All TOP Codes
Students Completing Training Leading to Non-traditional Employment

