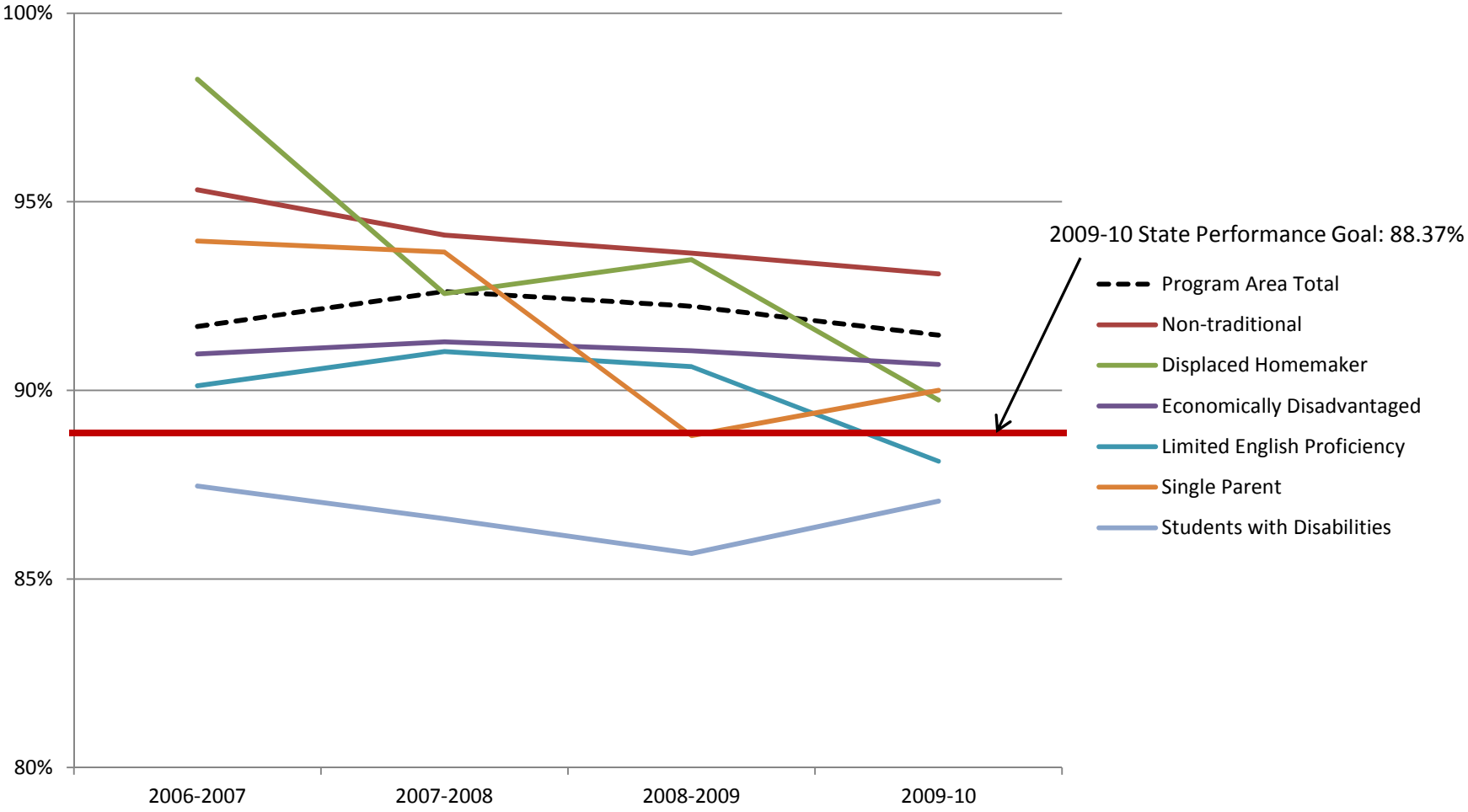




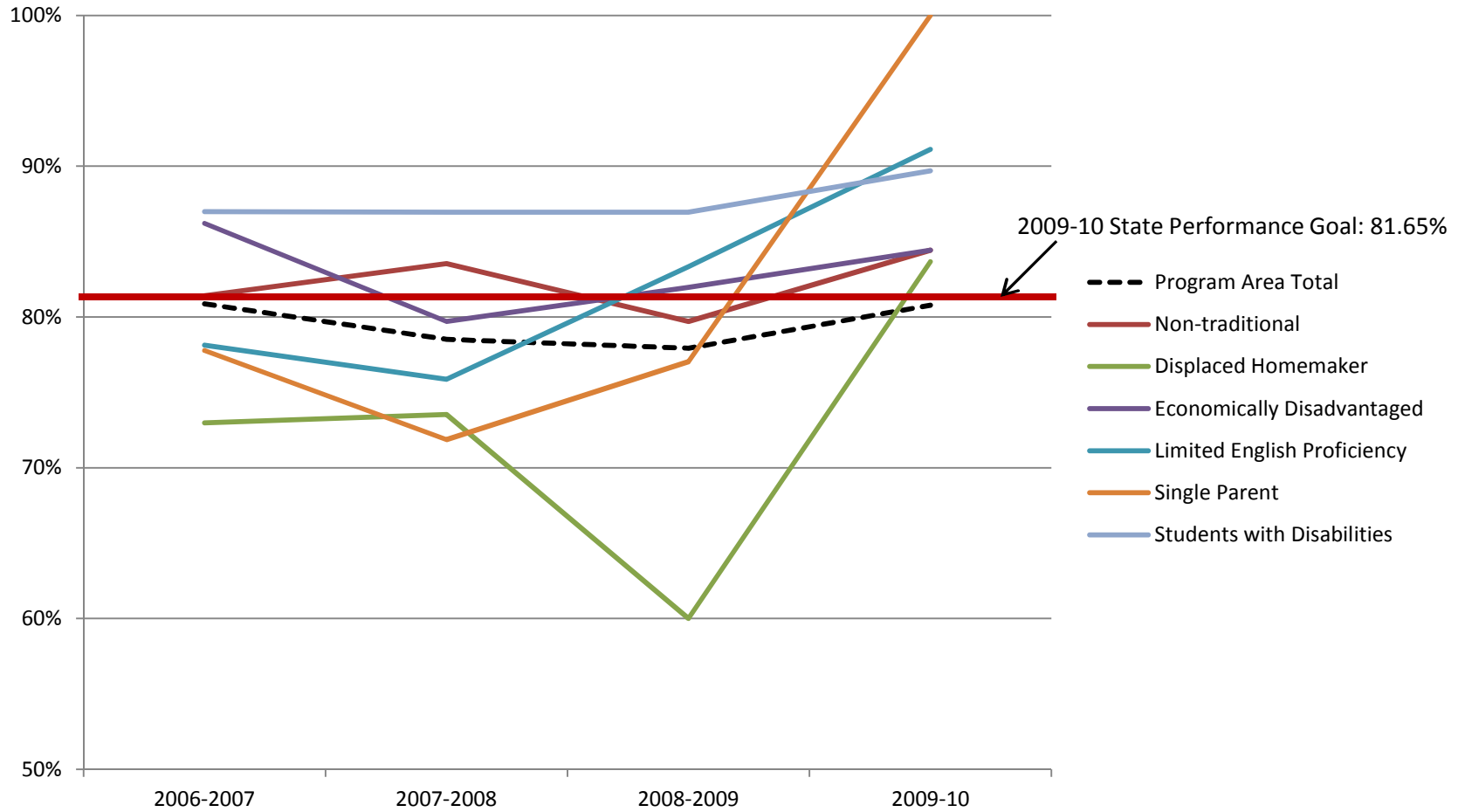
TOP 01
Agriculture & Natural Resources
Planning Year 2012-13

**Perkins IV Core Indicator 1P1: TOP Code 01 – Agriculture & Natural Resources– All Colleges
 CTE concentrators earning a GPA of 2.0 or higher in CTE courses to assess technical skill attainment**

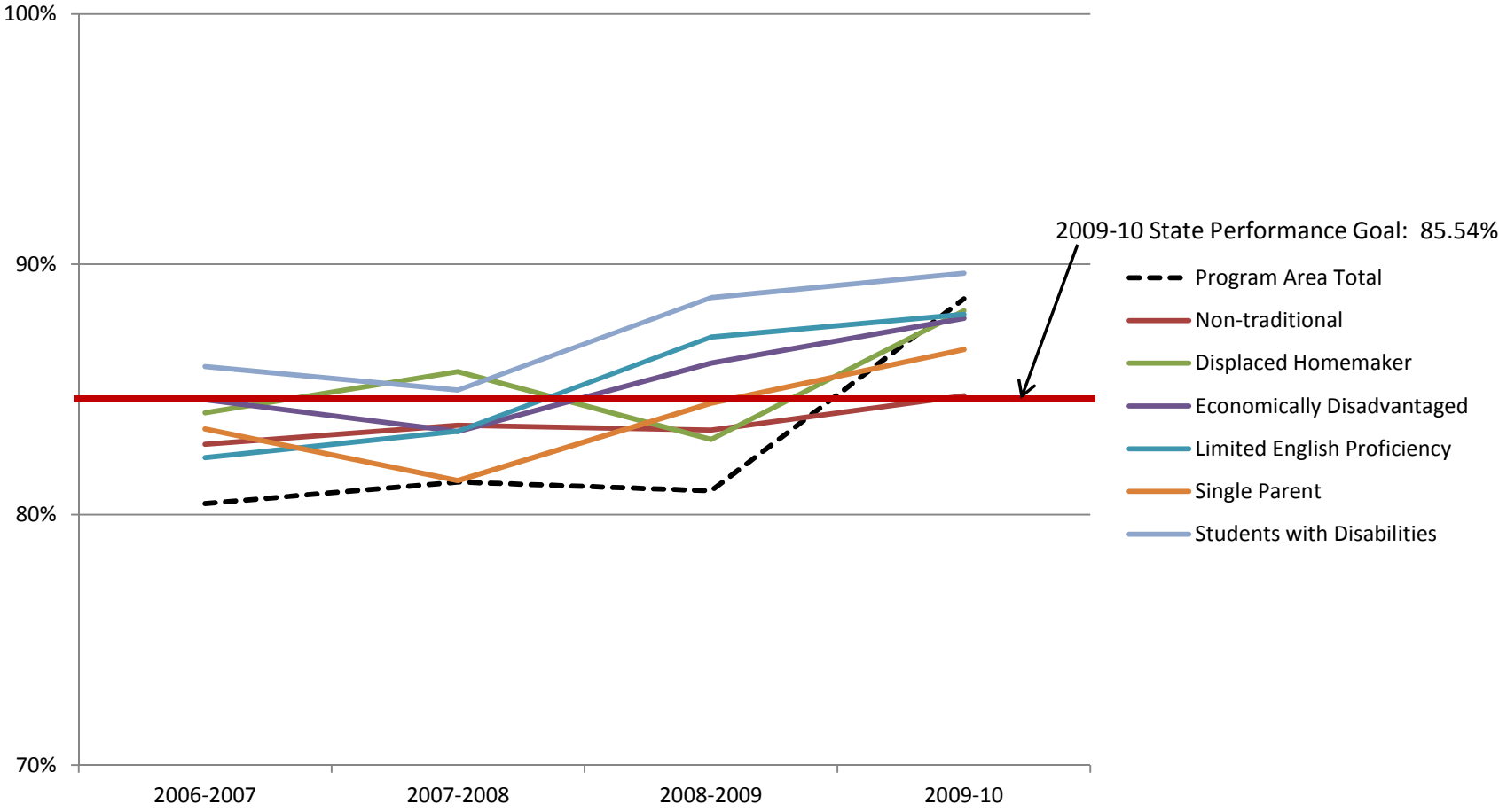


Data source: <http://reports.ccco.edu/Reports/Pages/Folder.aspx?ItemPath=%2fPERKINS+IV&ViewMode=List>

**Perkins IV Core Indicator 2P1: TOP Code 01 – Agriculture & Natural Resources– All Colleges
 "Leavers and Completer" concentrators who: 1) receive a degree, certificate, or equivalent;
 or 2) complete a transfer program and are classified as *Transfer Prepared***

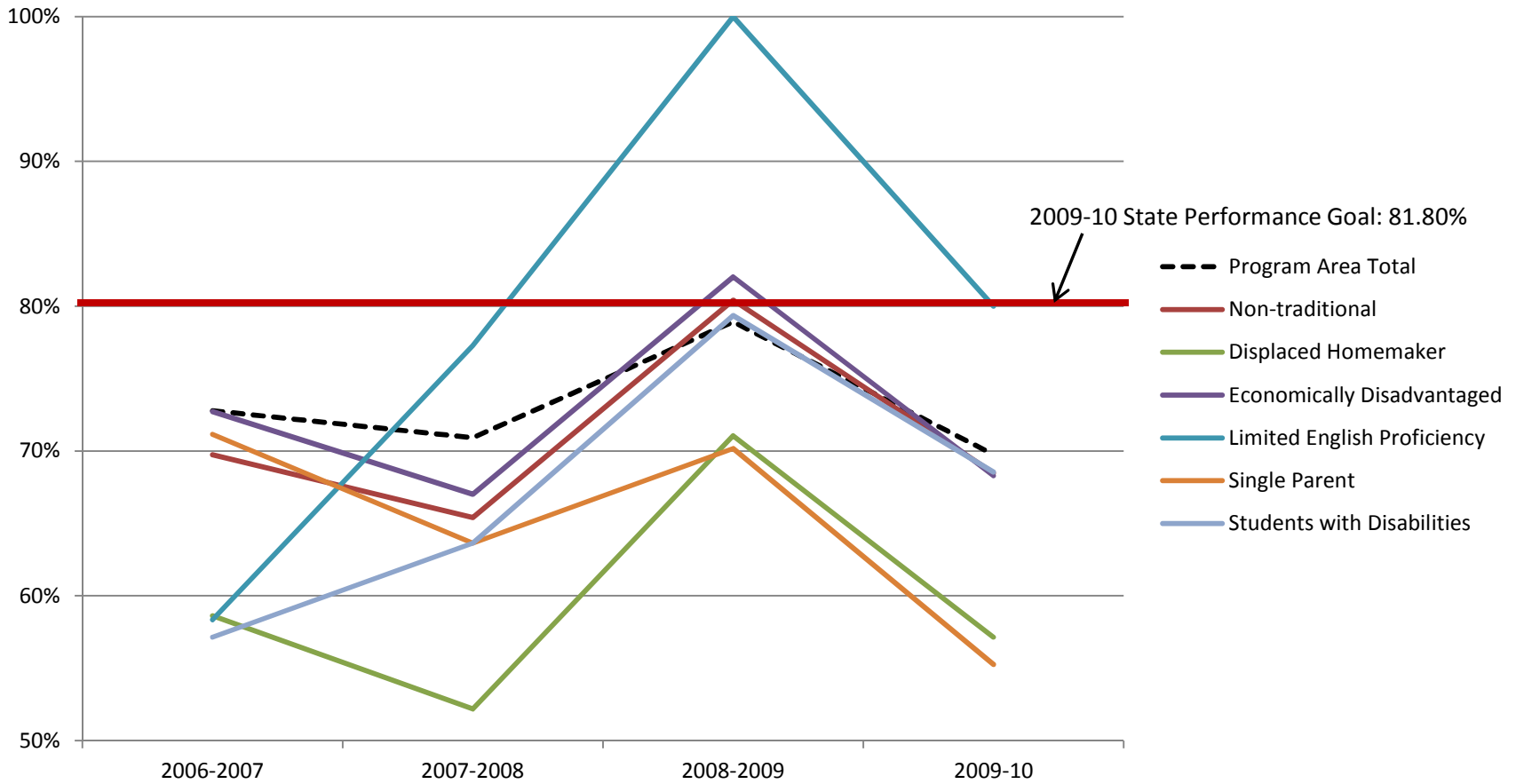


Perkins IV Core Indicator 3P1: TOP Code 01 – Agriculture & Natural Resources– All Colleges
Students who have successfully completed a minimum "threshold of 12 or more units of related coursework" in a CTE program area and who: 1) persisted in education at the community college level or 2) transferred to a four year institution

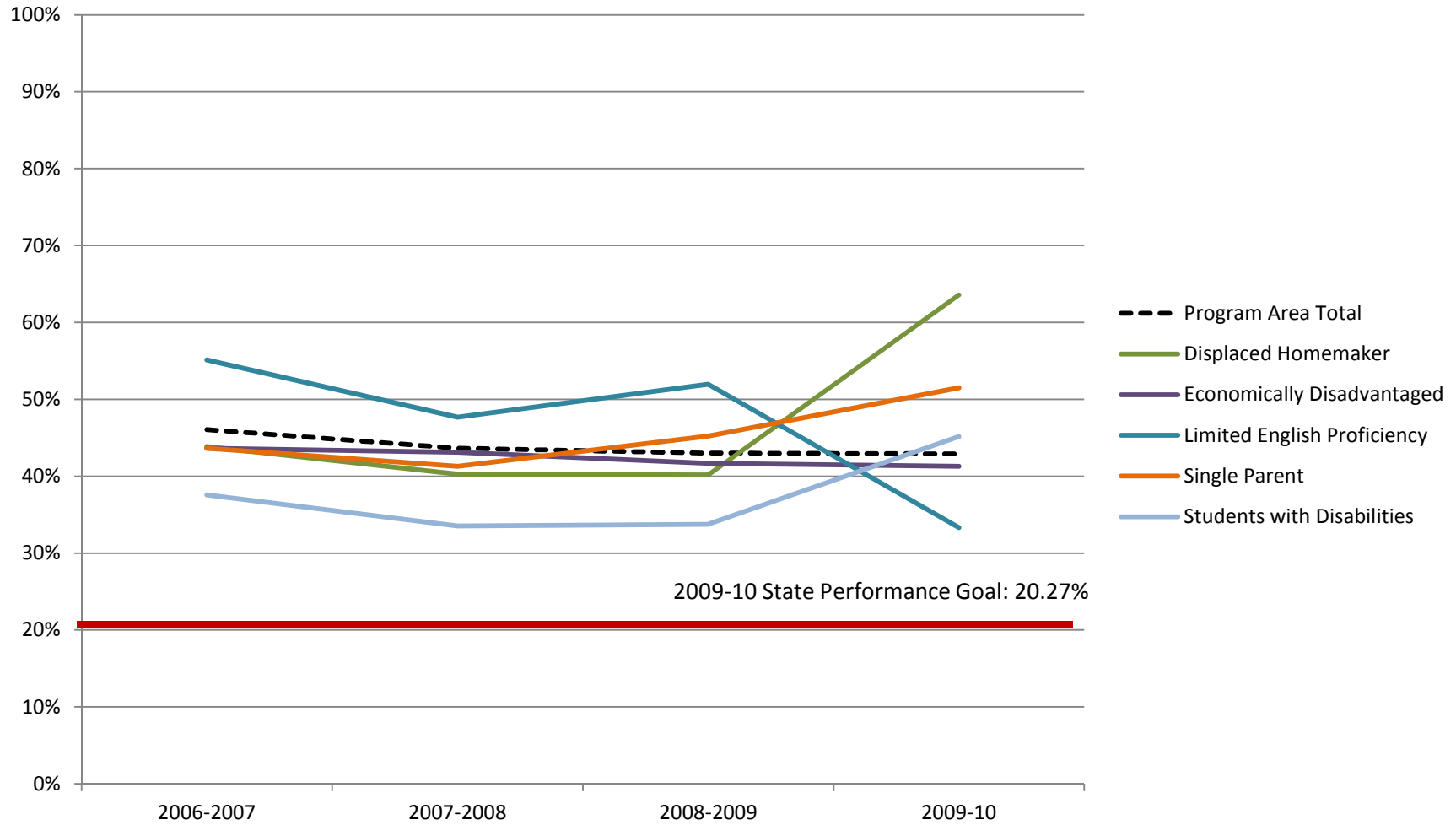


Perkins IV Core Indicator 4P1: TOP Code 01 – Agriculture & Natural Resources– All Colleges

The percentage of CTE program leavers and completers who did not transfer to a two or four year institution and were found during one of the four quarters following the cohort year in an apprenticeship program, UI covered employment, the federal Government, or the military



Perkins IV Core Indicator 5P1: TOP Code 01 – Agriculture & Natural Resources– All Colleges
Percent of underrepresented gender student concentrators participating in
CTE coursework leading to employment in nontraditional occupations



Perkins IV Core Indicator 5P2: TOP Code 01 – Agriculture & Natural Resources– All Colleges
Percent of nontraditional (underrepresented gender) student completers in CTE programs leading to non-traditional fields.
Completion is defined as 1) receiving a degree, 2) completing a transfer program, 3) transferring to a two- or four-year institution, or 4) enlisting in the military

