

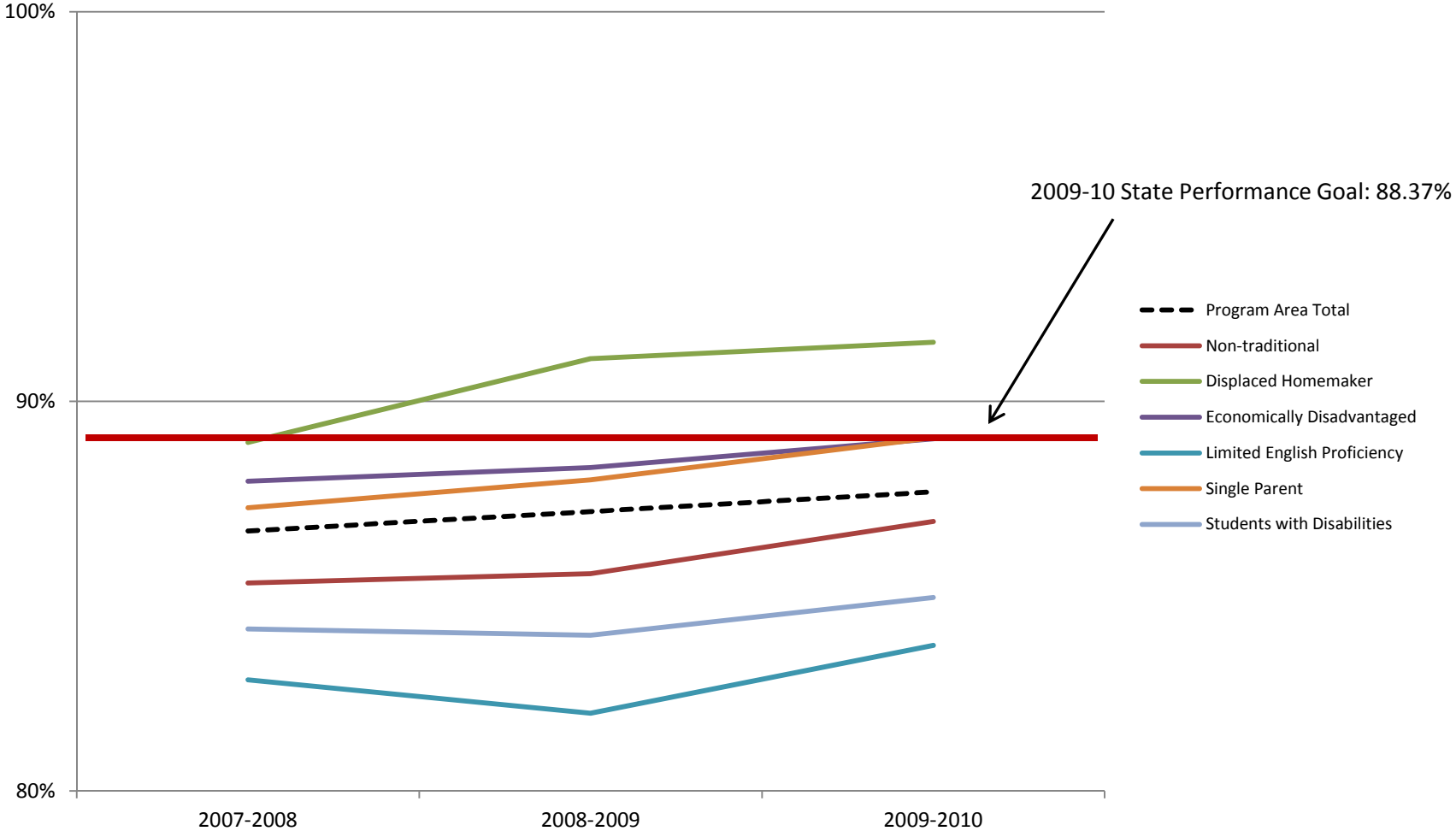


TOP 21

Public and Protective Services

Planning Year 2012-13

**Perkins IV Core Indicator 1P1: TOP Code 21 – Public and Protective Services – All Colleges
 CTE concentrators earning a GPA of 2.0 or higher in CTE courses to assess technical skill attainment**

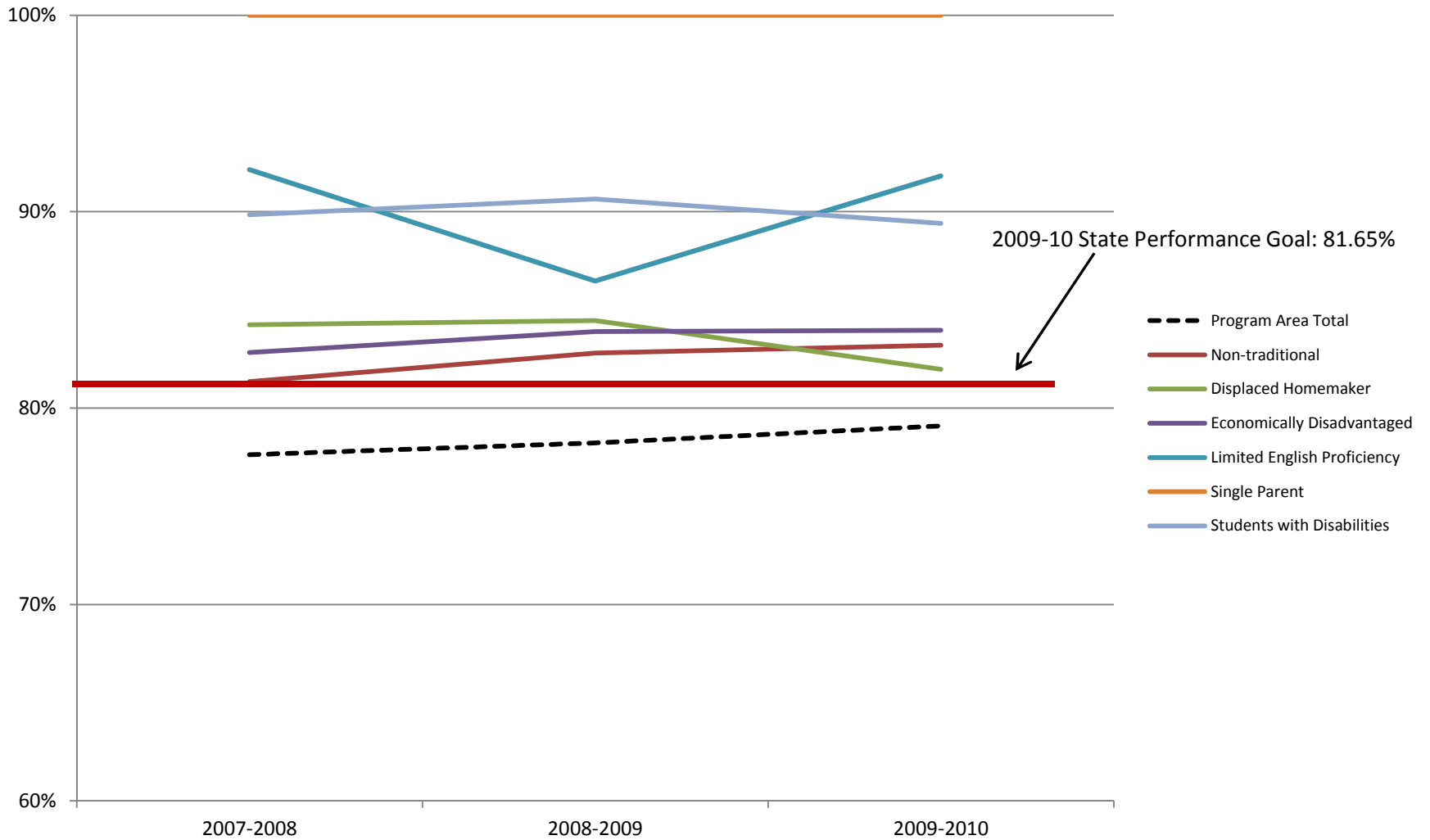


Data source: <http://reports.cccco.edu/Reports/Pages/Folder.aspx?ItemPath=%2fPERKINS+IV&ViewMode=List>

**Perkins IV Core Indicator 1P1: TOP Code 21 – Public and Protective Services – All Colleges
 CTE concentrators earning a GPA of 2.0 or higher in CTE courses to assess technical skill attainment**

	Percent			Count			Total		
	2007-2008	2008-2009	2009-2010	2007-2008	2008-2009	2009-2010	2007-2008	2008-2009	2009-2010
Program Area Total	86.67%	87.17%	87.68%	28,279	31,594	33,988	32,627	36,244	38,765
Non-traditional	85.34%	85.58%	86.92%	6,683	7,576	8,273	7,831	8,853	9,518
Displaced Homemaker	88.94%	91.09%	91.51%	708	982	1,100	796	1,078	1,202
Economically Disadvantaged	87.95%	88.30%	89.04%	10,911	13,161	16,790	12,406	14,905	18,857
Limited English Proficiency	82.85%	82.00%	83.74%	285	460	515	344	561	615
Single Parent	87.27%	87.99%	89.07%	1,967	2,556	2,819	2,254	2,905	3,165
Students with Disabilities	84.16%	83.99%	84.96%	1,700	1,947	2,226	2,020	2,318	2,620

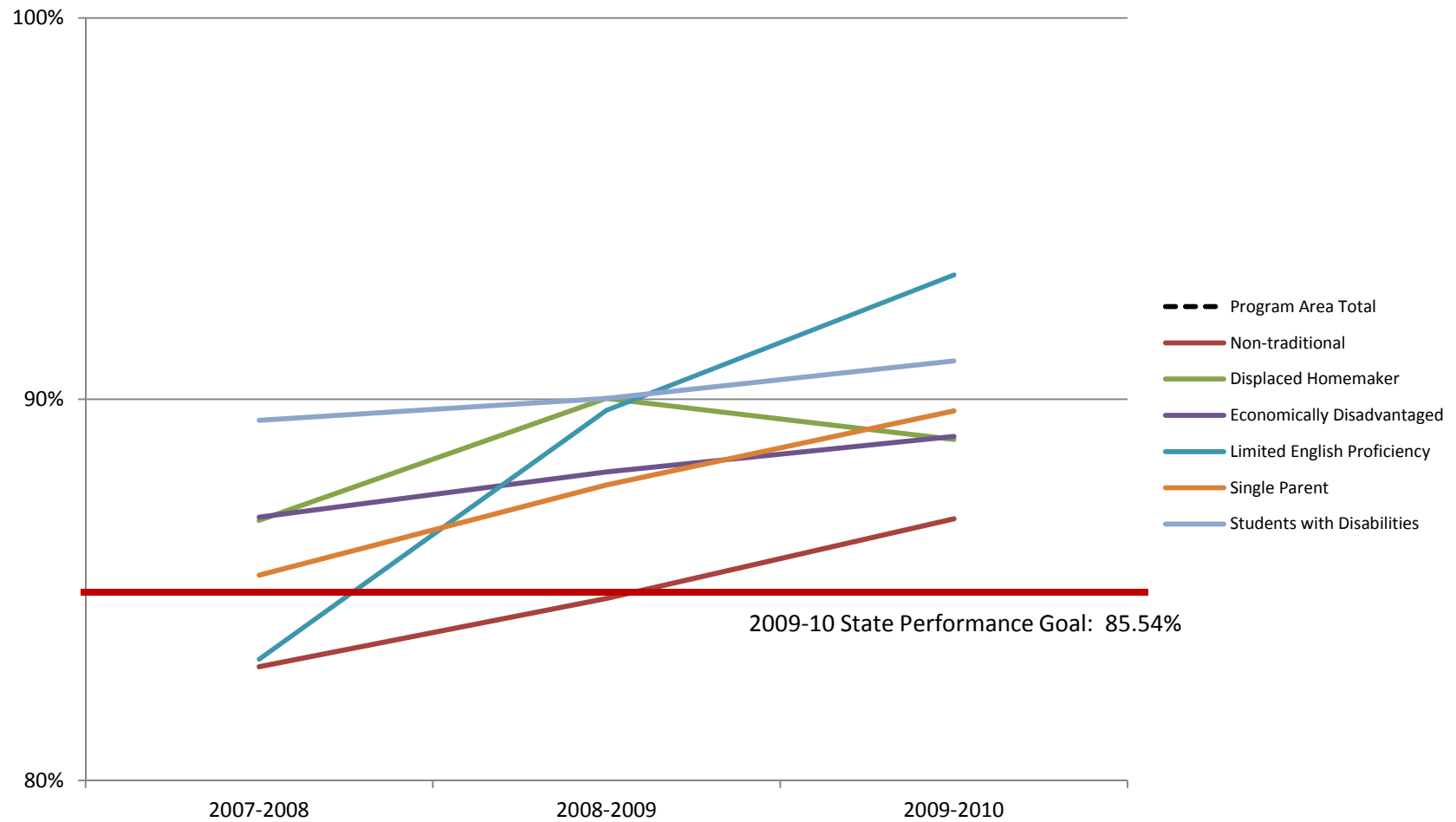
**Perkins IV Core Indicator 2P1: TOP Code 21 – Public and Protective Services – All Colleges
 "Leavers and Completer" concentrators who: 1) receive a degree, certificate, or equivalent;
 or 2) complete a transfer program and are classified as *Transfer Prepared***



**Perkins IV Core Indicator 2P1: TOP Code 21 – Public and Protective Services – All Colleges
 "Leavers and Completer" concentrators who: 1) receive a degree, certificate, or equivalent;
 or 2) complete a transfer program and are classified as *Transfer Prepared***

	Percent			Count			Total		
	2007-2008	2008-2009	2009-2010	2007-2008	2008-2009	2009-2010	2007-2008	2008-2009	2009-2010
Program Area Total	78%	78%	79%	11,236	11,861	11,955	14,474	15,162	15,115
Non-traditional	81%	83%	83%	2,926	3,217	3,269	3,597	3,885	3,929
Displaced Homemaker	84%	84%	82%	262	326	341	311	386	416
Economically Disadvantaged	83%	84%	84%	4,573	5,165	6,286	5,521	6,157	7,487
Limited English Proficiency	92%	86%	92%	164	230	247	178	266	269
Single Parent	100%	100%	100%	724	919	937	724	919	937
Students with Disabilities	90%	91%	89%	876	940	995	975	1,037	1,113

Perkins IV Core Indicator 3P1: TOP Code 21 – Public and Protective Services – All Colleges
Students who have successfully completed a minimum "threshold of 12 or more units of related coursework" in a CTE program area and who: 1) persisted in education at the community college level or 2) transferred to a four year institution



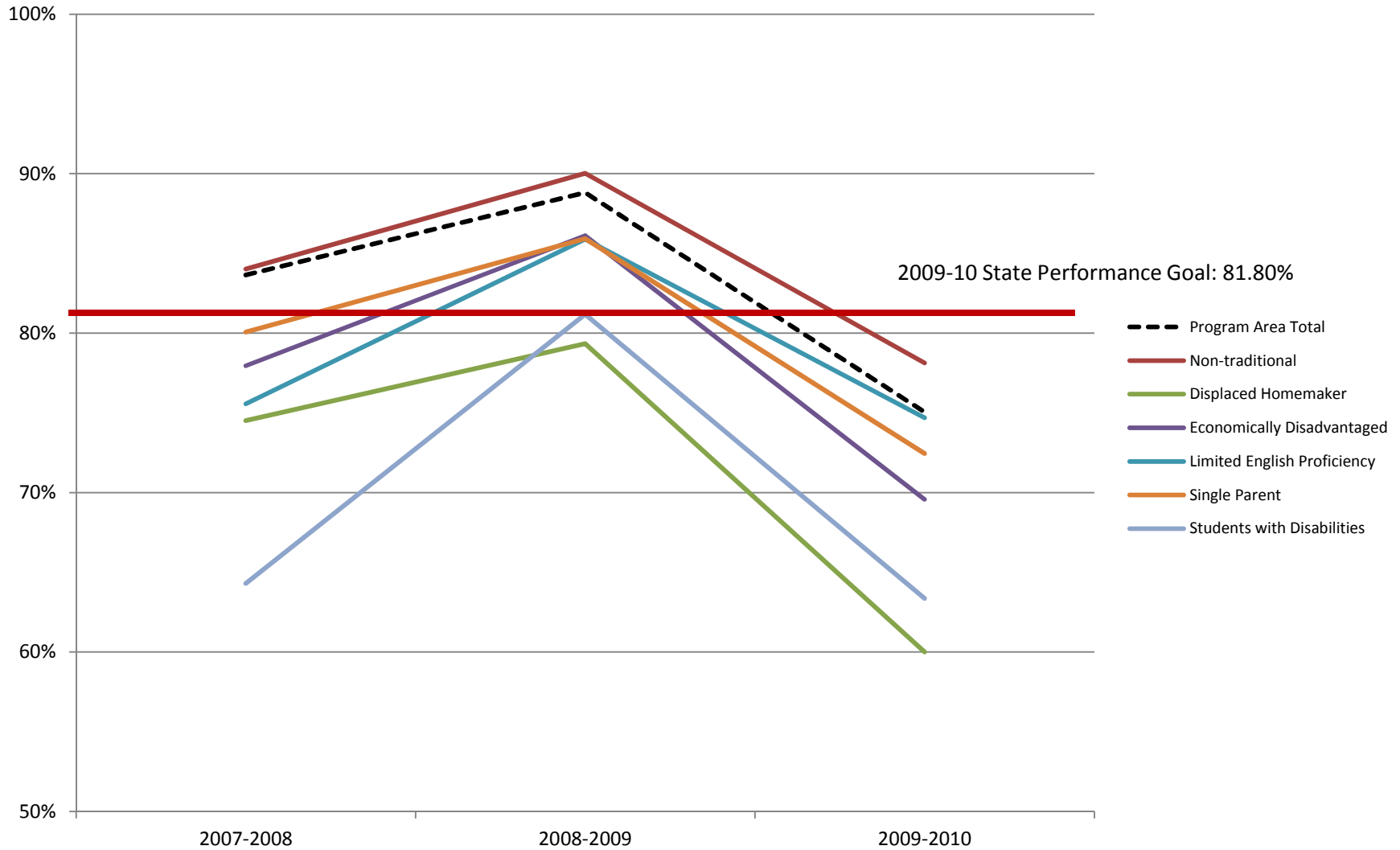
Perkins IV Core Indicator 3P1: TOP Code 21 – Public and Protective Services – All Colleges

Students who have successfully completed a minimum "threshold of 12 or more units of related coursework" in a CTE program area and who: 1) persisted in education at the community college level or 2) transferred to a four year institution

	Percent			Count			Total		
	2007-2008	2008-2009	2009-2010	2007-2008	2008-2009	2009-2010	2007-2008	2008-2009	2009-2010
Program Area Total	78%	74%	70%	19,857	21,617	22,496	25,559	29,144	32,213
Non-traditional	83%	85%	87%	6,378	7,388	8,160	7,686	8,715	9,394
Displaced Homemaker	87%	90%	89%	685	965	1,062	789	1,072	1,194
Economically Disadvantaged	87%	88%	89%	10,682	13,021	16,658	12,291	14,781	18,712
Limited English Proficiency	83%	90%	93%	277	497	567	333	554	608
Single Parent	85%	88%	90%	1,905	2,529	2,812	2,231	2,882	3,135
Students with Disabilities	89%	90%	91%	1,780	2,056	2,346	1,990	2,284	2,578

Perkins IV Core Indicator 4P1: TOP Code 21 – Public and Protective Services – All Colleges

The percentage of CTE program leavers and completers who did not transfer to a two or four year institution and were found during one of the four quarters following the cohort year in an apprenticeship program, UI covered employment, the federal Government, or the military

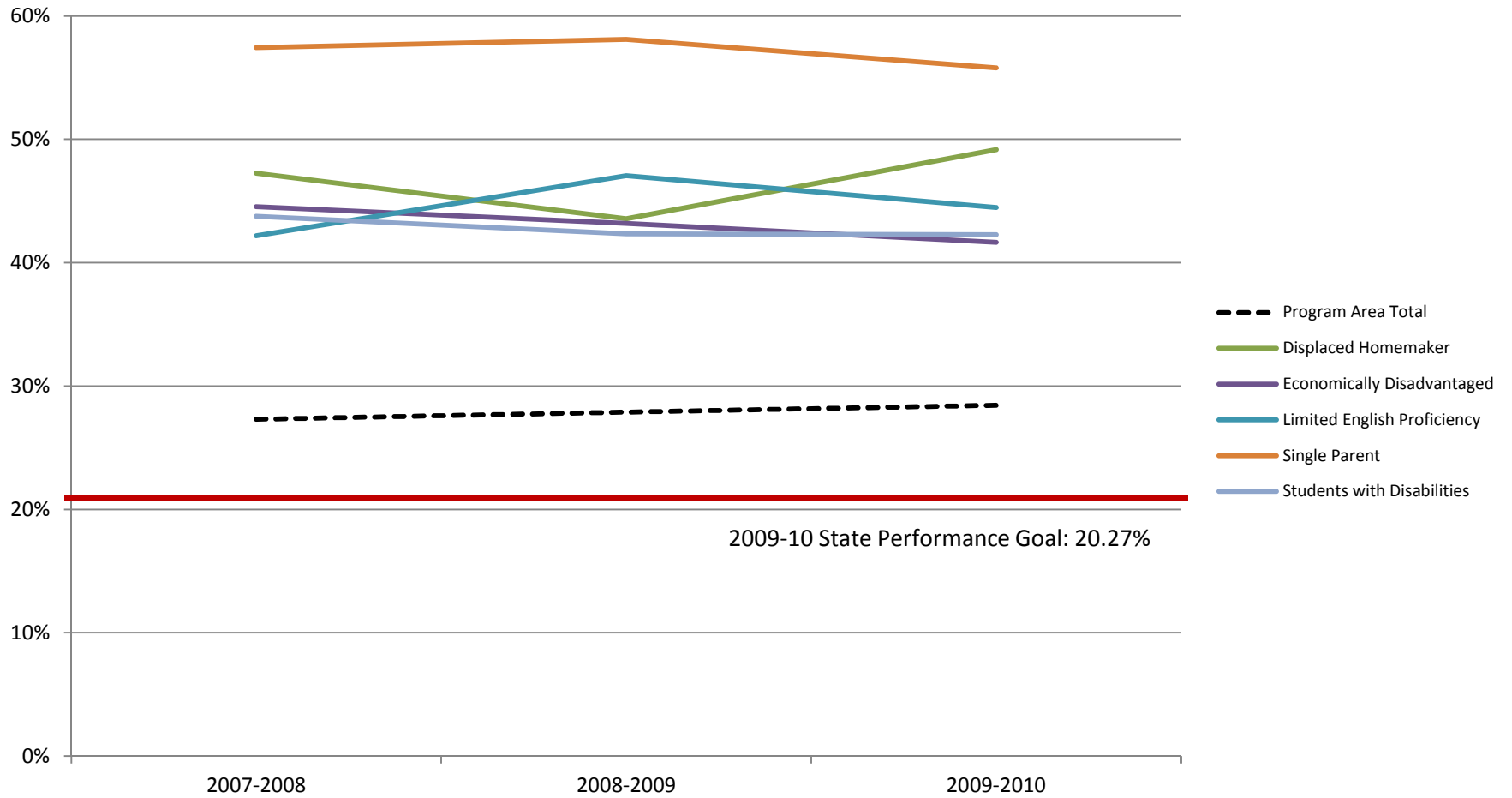


Perkins IV Core Indicator 4P1: TOP Code 21 – Public and Protective Services – All Colleges

The percentage of CTE program leavers and completers who did not transfer to a two or four year institution and were found during one of the four quarters following the cohort year in an apprenticeship program, UI covered employment, the federal Government, or the military

	Percent			Count			Total		
	2007-2008	2008-2009	2009-2010	2007-2008	2008-2009	2009-2010	2007-2008	2008-2009	2009-2010
Program Area Total	84%	89%	75%	16,161	18,854	16,204	19,321	21,228	21,594
Non-traditional	84%	90%	78%	2,128	2,516	2,104	2,533	2,795	2,693
Displaced Homemaker	75%	79%	60%	155	215	180	208	271	300
Economically Disadvantaged	78%	86%	70%	2,881	3,567	3,521	3,696	4,142	5,061
Limited English Proficiency	76%	86%	75%	102	140	118	135	163	158
Single Parent	80%	86%	72%	506	671	552	632	781	762
Students with Disabilities	64%	81%	63%	425	578	493	661	712	778

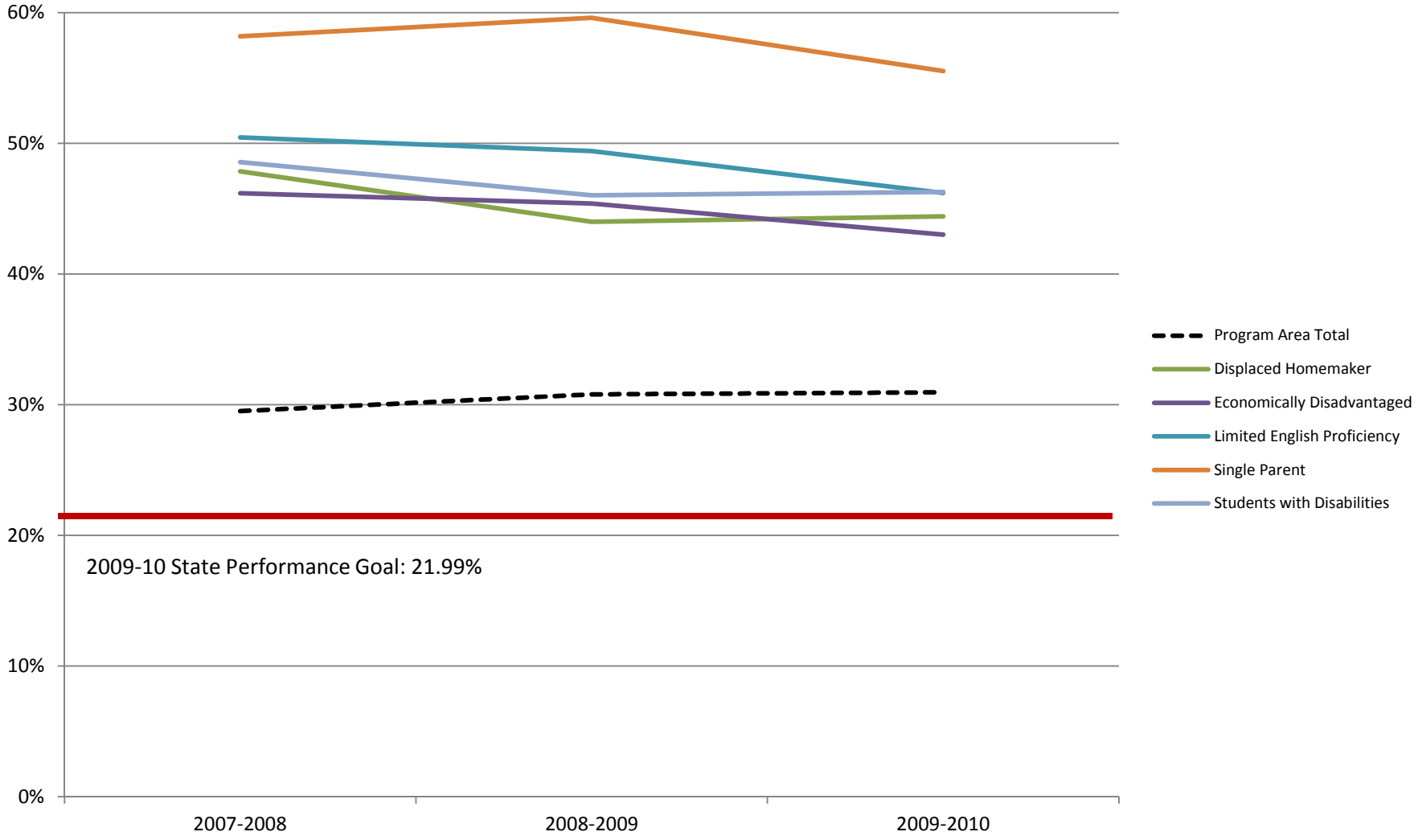
Perkins IV Core Indicator 5P1: TOP Code 21 – Public and Protective Services – All Colleges
Percent of underrepresented gender student concentrators participating in
CTE coursework leading to employment in nontraditional occupations



Perkins IV Core Indicator 5P1: TOP Code 21 – Public and Protective Services – All Colleges
Percent of underrepresented gender student concentrators participating in
CTE coursework leading to employment in nontraditional occupations

	Percent			Count			Total		
	2007-2008	2008-2009	2009-2010	2007-2008	2008-2009	2009-2010	2007-2008	2008-2009	2009-2010
Program Area Total	27%	28%	28%	7,832	8,854	9,518	28,684	31,742	33,478
Displaced Homemaker	47%	44%	49%	223	277	325	472	636	661
Economically Disadvantaged	45%	43%	42%	4,278	5,010	6,133	9,603	11,605	14,729
Limited English Proficiency	42%	47%	44%	97	184	197	230	391	443
Single Parent	57%	58%	56%	928	1,168	1,208	1,616	2,010	2,165
Students with Disabilities	44%	42%	42%	453	505	558	1,035	1,193	1,320

Perkins IV Core Indicator 5P2: TOP Code 21 – Public and Protective Services – All Colleges
Percent of nontraditional (underrepresented gender) student completers in CTE programs leading to non-traditional fields.
Completion is defined as 1) receiving a degree, 2) completing a transfer program, 3) transferring to a two- or four-year institution, or 4) enlisting in the military



Perkins IV Core Indicator 5P2: TOP Code 21 – Public and Protective Services – All Colleges

**Percent of nontraditional (underrepresented gender) student completers in CTE programs leading to non-traditional fields.
Completion is defined as 1) receiving a degree, 2) completing a transfer program, 3) transferring to a two- or four-year institution, or 4) enlisting in the military**

	Percent			Count			Total		
	2007-2008	2008-2009	2009-2010	2007-2008	2008-2009	2009-2010	2007-2008	2008-2009	2009-2010
Program Area Total	30%	31%	31%	3,662	4,137	3,813	12,409	13,442	12,320
Non-traditional	29%	31%	31%	3,662	4,137	3,813	12,472	13,542	12,400
Displaced Homemaker	48%	44%	44%	89	106	103	186	241	232
Economically Disadvantaged	46%	45%	43%	1,926	2,226	2,349	4,171	4,904	5,462
Limited English Proficiency	50%	49%	46%	56	82	79	111	166	171
Single Parent	58%	60%	56%	370	463	407	636	777	733
Students with Disabilities	49%	46%	46%	235	249	248	484	541	536