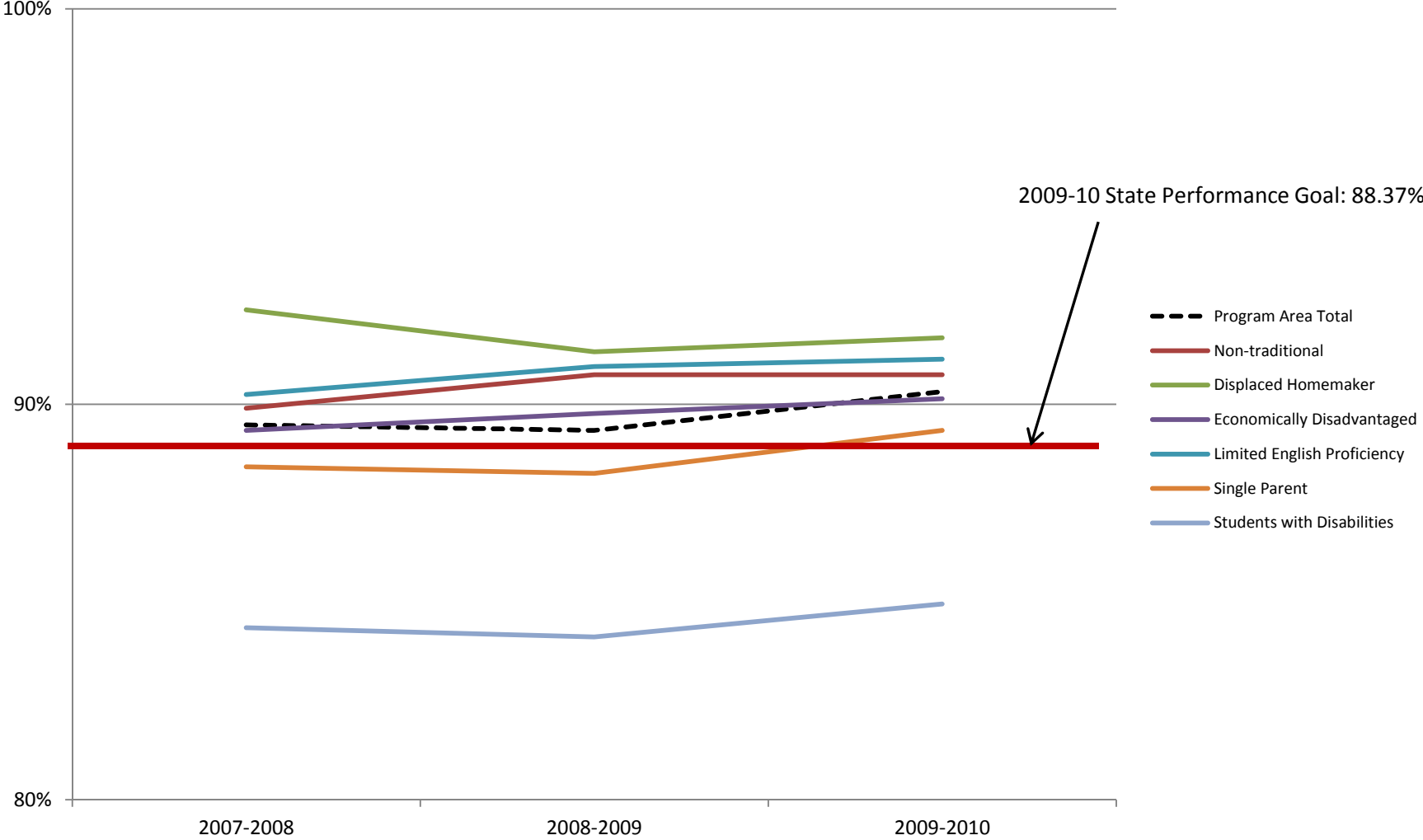




TOP 13
Family and Consumer Sciences
Planning Year 2012-13

**Perkins IV Core Indicator 1P1: TOP Code 13 – Family and Consumer Sciences– All Colleges
 CTE concentrators earning a GPA of 2.0 or higher in CTE courses to assess technical skill attainment**

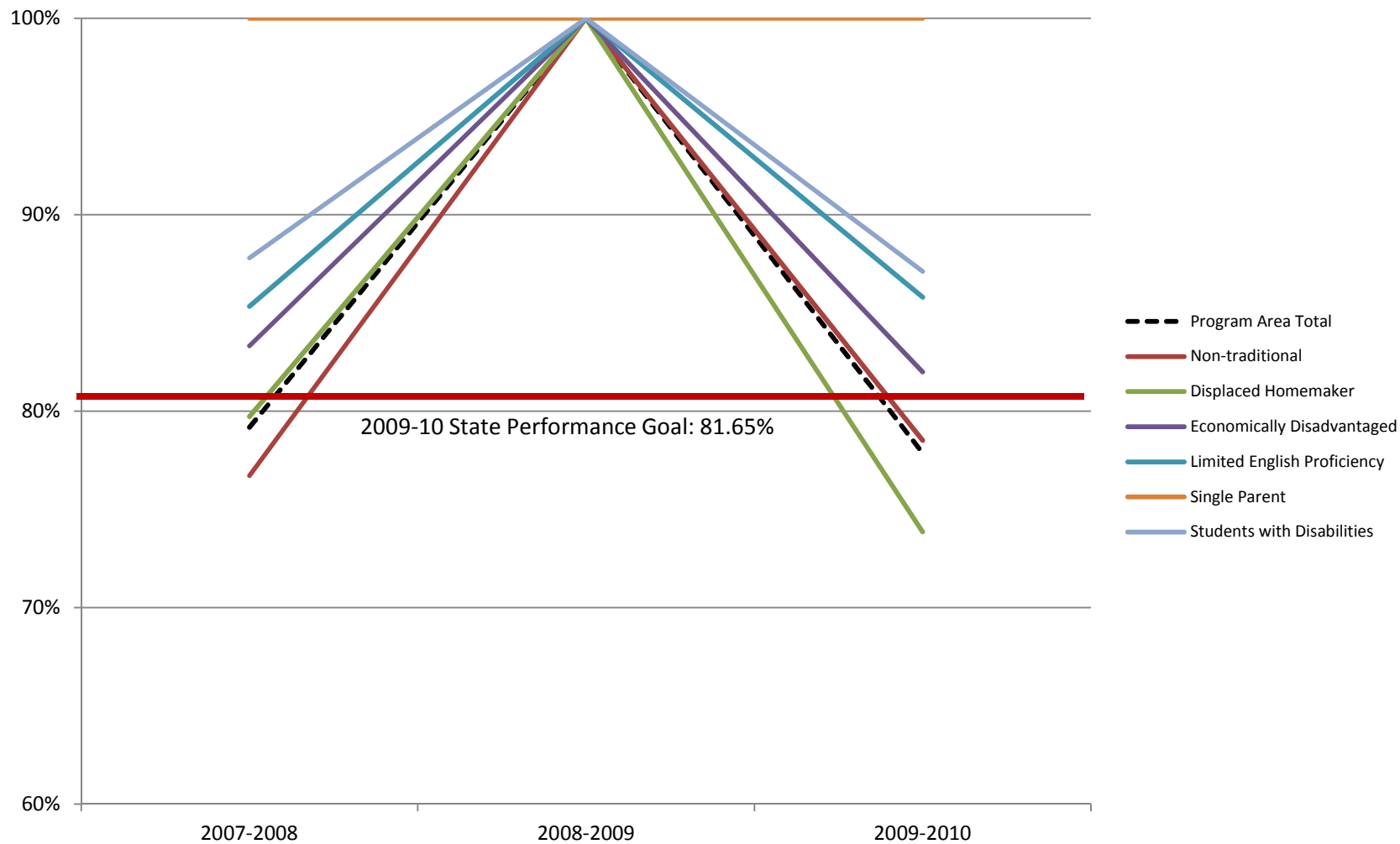


Data source: <http://reports.cccco.edu/Reports/Pages/Folder.aspx?ItemPath=%2fPERKINS+IV&ViewMode=List>

**Perkins IV Core Indicator 1P1: TOP Code 13 – Family and Consumer Sciences – All Colleges
CTE concentrators earning a GPA of 2.0 or higher in CTE courses to assess technical skill attainment**

	Percent			Count			Total		
	2007-2008	2008-2009	2009-2010	2007-2008	2008-2009	2009-2010	2007-2008	2008-2009	2009-2010
Program Area Total	89.48%	89.34%	90.32%	29,377	31,376	32,906	32831	35,120	36,432
Non-traditional	89.90%	90.74%	90.75%	2,358	2,735	3,099	2623	3,014	3,415
Displaced Homemaker	92.39%	91.32%	91.68%	1,262	1,663	1,896	1366	1,821	2,068
Economically Disadvantaged	89.34%	89.77%	90.14%	15,933	17,259	20,097	17835	19,226	22,296
Limited English Proficiency	90.25%	90.96%	91.14%	3,665	4,043	3,846	4061	4,445	4,220
Single Parent	88.42%	88.25%	89.34%	2,497	2,908	3,209	2824	3,295	3,592
Students with Disabilities	84.35%	84.12%	84.95%	2,442	2,622	2,766	2895	3,117	3,256

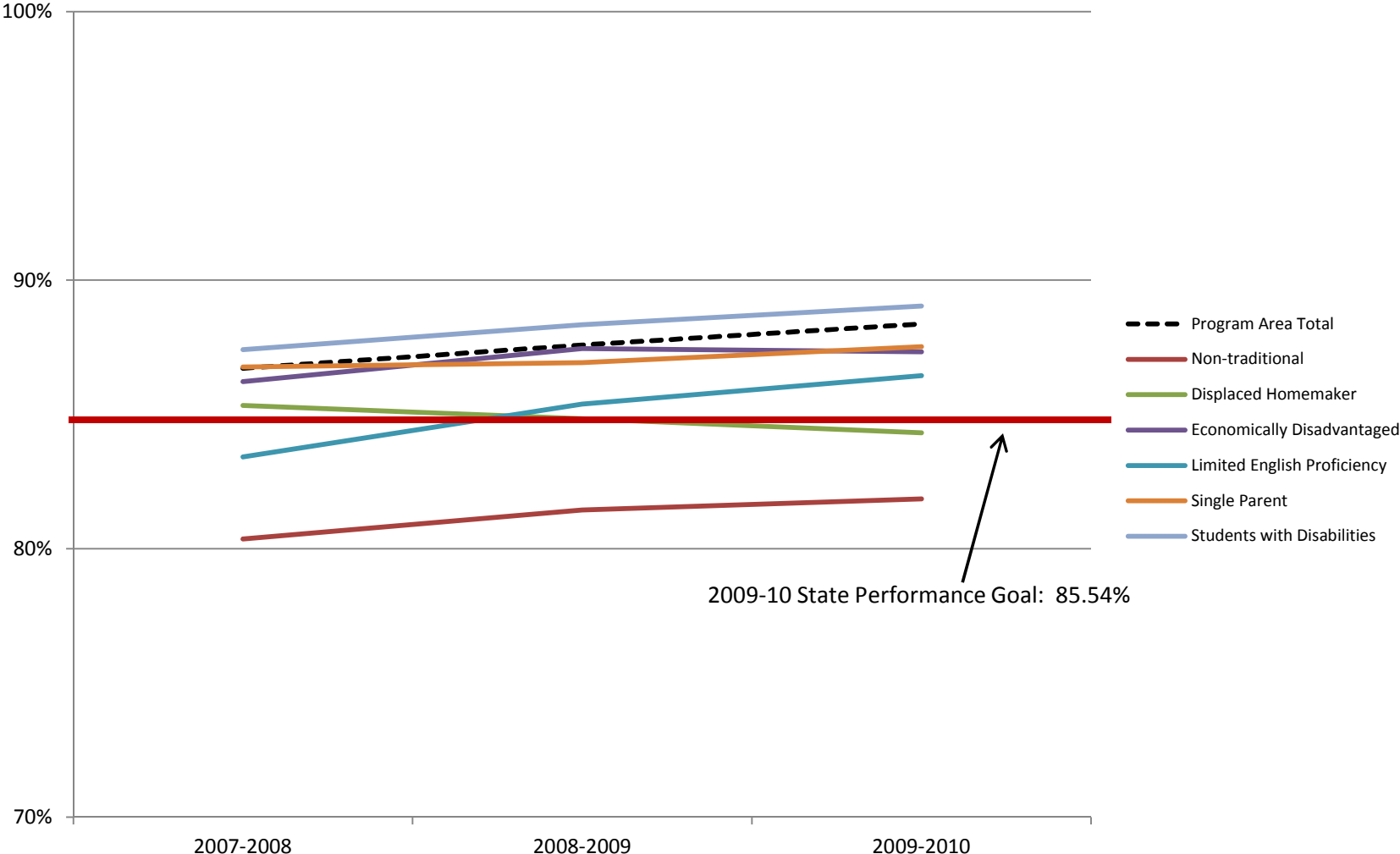
**Perkins IV Core Indicator 2P1: TOP Code 13 – Family and Consumer Sciences – All Colleges
 "Leavers and Completer" concentrators who: 1) receive a degree, certificate, or equivalent;
 or 2) complete a transfer program and are classified as *Transfer Prepared***



**Perkins IV Core Indicator 2P1: TOP Code 13 – Family and Consumer Sciences – All Colleges
 "Leavers and Completer" concentrators who: 1) receive a degree, certificate, or equivalent;
 or 2) complete a transfer program and are classified as *Transfer Prepared***

	Percent			Count			Total		
	2007-2008	2008-2009	2009-2010	2007-2008	2008-2009	2009-2010	2007-2008	2008-2009	2009-2010
Program Area Total	79%	100%	78%	11,103	14,668	11,350	14,022	14,668	14,576
Non-traditional	77%	100%	79%	870	1,208	1,059	1,134	1,208	1,349
Displaced Homemaker	80%	100%	74%	401	649	562	503	649	761
Economically Disadvantaged	83%	100%	82%	6,582	8,074	7,154	7,900	8,074	8,725
Limited English Proficiency	85%	100%	86%	1,589	1,897	1,522	1,862	1,897	1,774
Single Parent	100%	100%	100%	898	1,016	1,006	898	1,016	1,006
Students with Disabilities	88%	100%	87%	1,158	1,347	1,149	1,319	1,347	1,319

Perkins IV Core Indicator 3P1: TOP Code 13 – Family and Consumer Sciences – All Colleges
Students who have successfully completed a minimum "threshold of 12 or more units of related coursework" in a CTE program area and who: 1) persisted in education at the community college level or 2) transferred to a four year institution



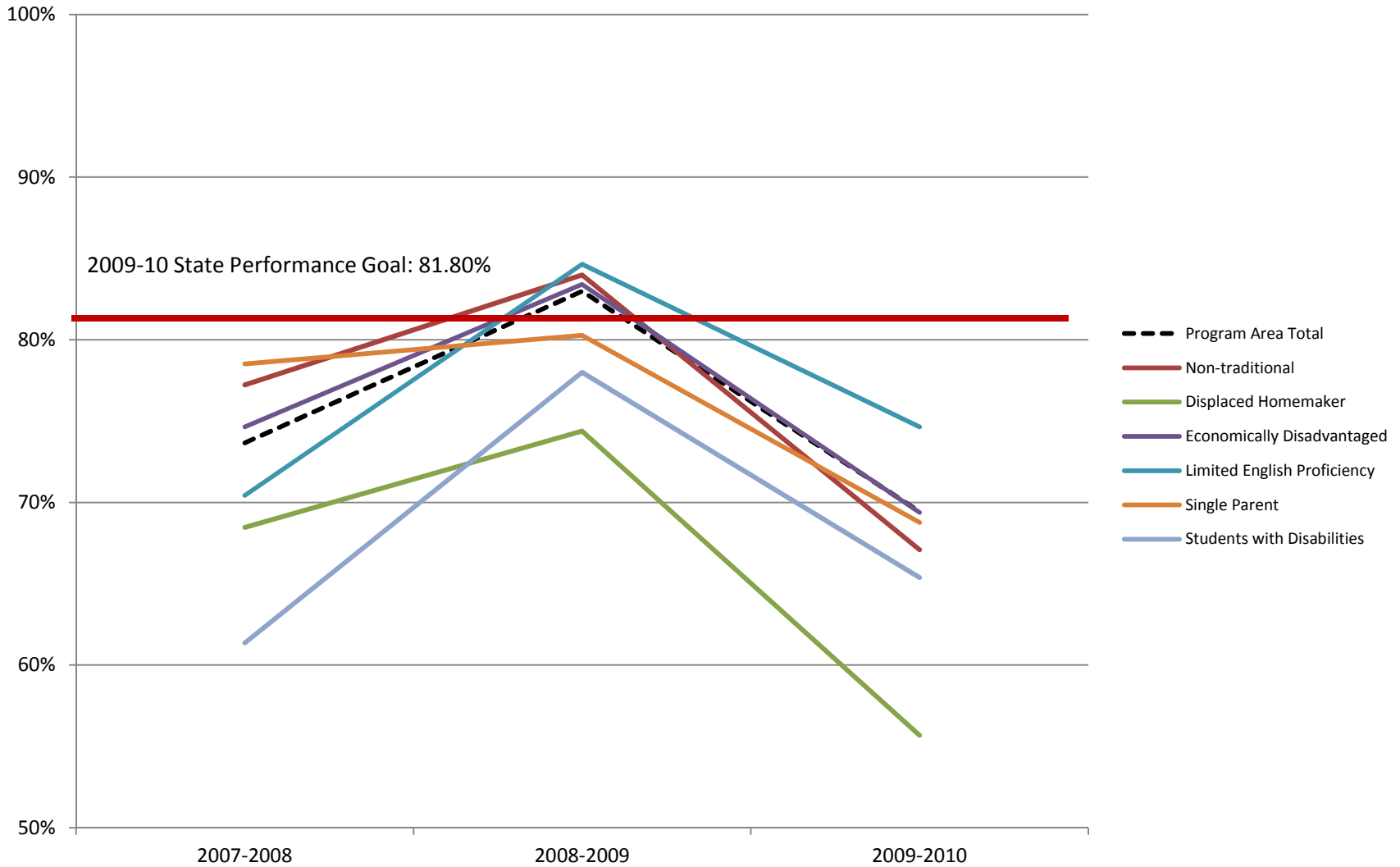
Perkins IV Core Indicator 3P1: TOP Code 13 – Family and Consumer Sciences – All Colleges

Students who have successfully completed a minimum "threshold of 12 or more units of related coursework" in a CTE program area and who: 1) persisted in education at the community college level or 2) transferred to a four year institution

	Percent			Count			Total		
	2007-2008	2008-2009	2009-2010	2007-2008	2008-2009	2009-2010	2007-2008	2008-2009	2009-2010
Program Area Total	87%	88%	88%	26,574	28499	29,660	30,646	32,540	33,563
Non-traditional	80%	81%	82%	2,086	2422	2,773	2,596	2,974	3,388
Displaced Homemaker	85%	85%	84%	1,152	1539	1,730	1,350	1,814	2,052
Economically Disadvantaged	86%	87%	87%	15,211	16656	19,300	17,643	19,046	22,100
Limited English Proficiency	83%	85%	86%	3,335	3727	3,590	3,998	4,365	4,153
Single Parent	87%	87%	88%	2,419	2839	3,121	2,788	3,266	3,566
Students with Disabilities	87%	88%	89%	2,500	2718	2,858	2,860	3,077	3,210

Perkins IV Core Indicator 4P1: TOP Code 13 – Family and Consumer Sciences – All Colleges

The percentage of CTE program leavers and completers who did not transfer to a two or four year institution and were found during one of the four quarters following the cohort year in an apprenticeship program, UI covered employment, the federal Government, or the military

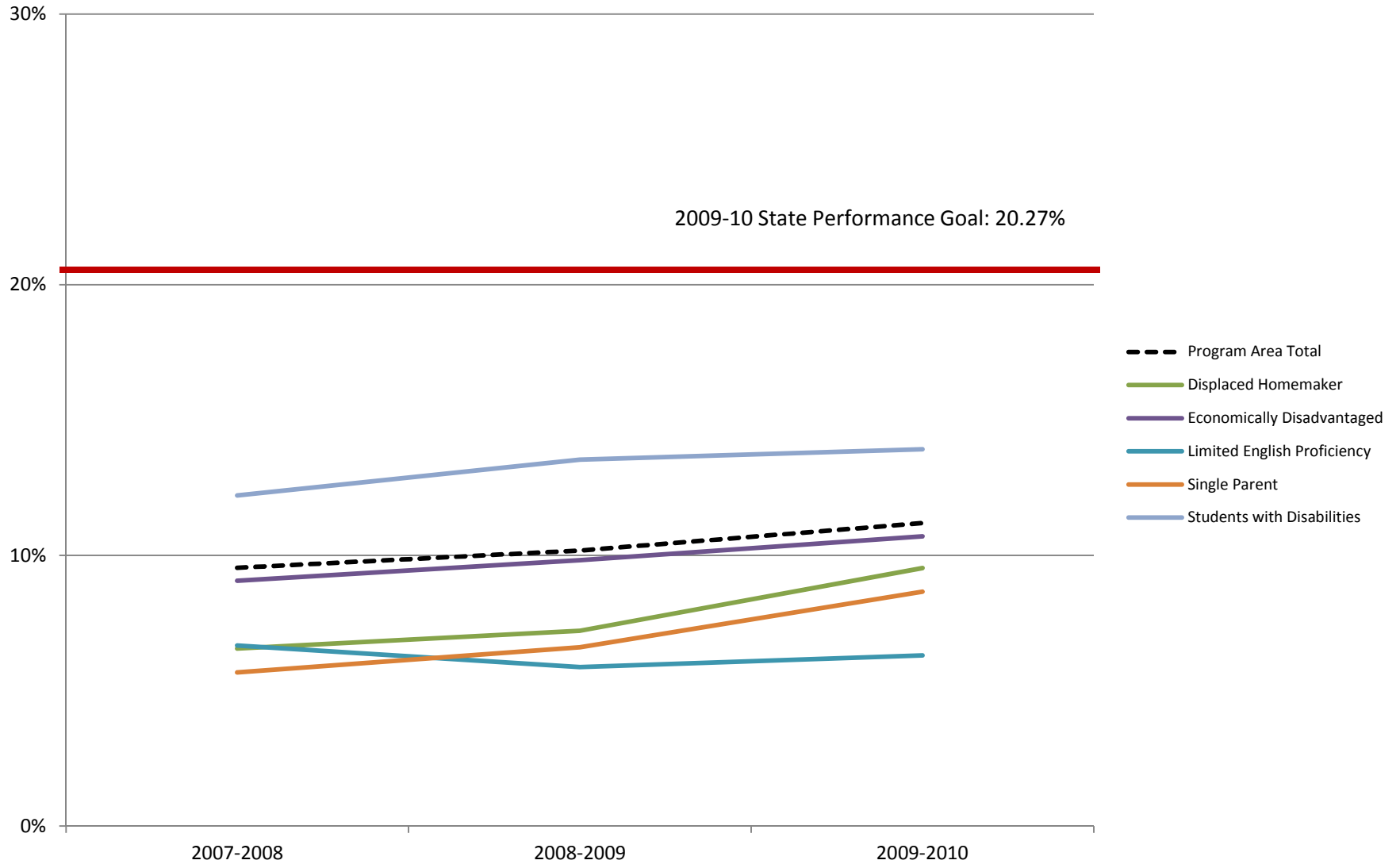


Perkins IV Core Indicator 4P1: TOP Code 13 – Family and Consumer Sciences – All Colleges

The percentage of CTE program leavers and completers who did not transfer to a two or four year institution and were found during one of the four quarters following the cohort year in an apprenticeship program, UI covered employment, the federal Government, or the military

	Percent			Count			Total		
	2007-2008	2008-2009	2009-2010	2007-2008	2008-2009	2009-2010	2007-2008	2008-2009	2009-2010
Program Area Total	74%	83%	69%	15,504	18,838	16,281	21,047	22,702	23,449
Non-traditional	77%	84%	67%	705	871	775	913	1,037	1,155
Displaced Homemaker	68%	74%	56%	280	395	358	409	531	643
Economically Disadvantaged	75%	83%	69%	4,116	4,802	4,411	5,514	5,757	6,357
Limited English Proficiency	70%	85%	75%	1,074	1,279	1,030	1,525	1,511	1,380
Single Parent	79%	80%	69%	643	761	685	819	948	996
Students with Disabilities	61%	78%	65%	578	734	610	942	941	933

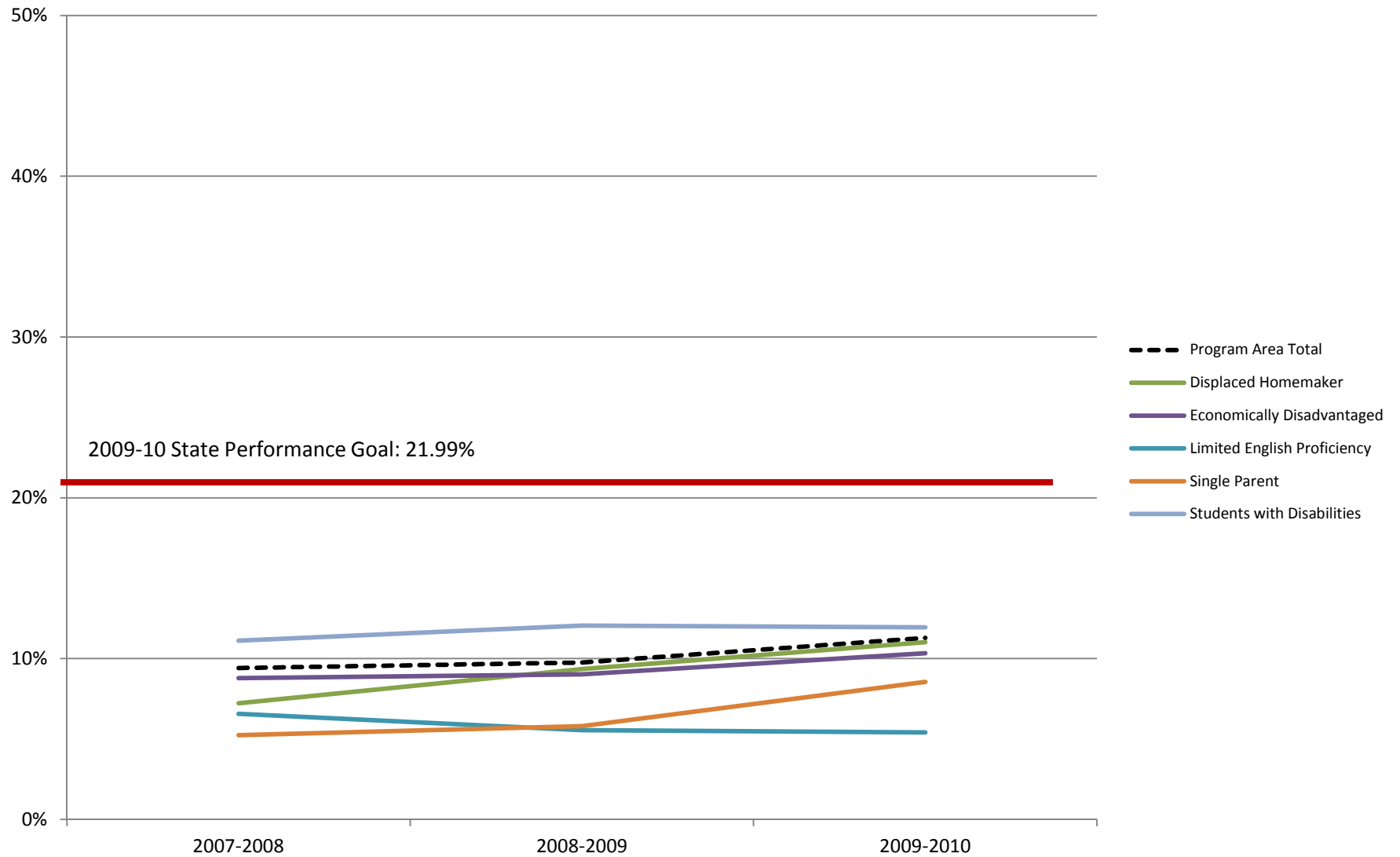
Perkins IV Core Indicator 5P1: TOP Code 13 – Family and Consumer Sciences – All Colleges
Percent of underrepresented gender student concentrators participating in
CTE coursework leading to employment in nontraditional occupations



Perkins IV Core Indicator 5P1: TOP Code 13 – Family and Consumer Sciences – All Colleges
Percent of underrepresented gender student concentrators participating in
CTE coursework leading to employment in nontraditional occupations

	Percent			Count			Total		
	2007-2008	2008-2009	2009-2010	2007-2008	2008-2009	2009-2010	2007-2008	2008-2009	2009-2010
Program Area Total	10%	10%	11%	2,625	3,014	3,416	27,513	29,600	30,513
Displaced Homemaker	7%	7%	10%	74	112	164	1,128	1,552	1,720
Economically Disadvantaged	9%	10%	11%	1,416	1,657	2,069	15,620	16,864	19,336
Limited English Proficiency	7%	6%	6%	240	232	237	3,600	3,949	3,757
Single Parent	6%	7%	9%	141	193	276	2,483	2,922	3,187
Students with Disabilities	12%	14%	14%	305	370	393	2,498	2,734	2,823

Perkins IV Core Indicator 5P2: TOP Code 13 – Family and Consumer Sciences – All Colleges
Percent of nontraditional (underrepresented gender) student completers in CTE programs leading to non-traditional fields.
Completion is defined as 1) receiving a degree, 2) completing a transfer program, 3) transferring to a two- or four-year institution, or 4) enlisting in the military



Perkins IV Core Indicator 5P2: TOP Code 13 – Family and Consumer Sciences – All Colleges
Percent of nontraditional (underrepresented gender) student completers in CTE programs leading to non-traditional fields.
Completion is defined as 1) receiving a degree, 2) completing a transfer program, 3) transferring to a two- or four-year institution, or 4) enlisting in the military

	Percent			Count			Total		
	2007-2008	2008-2009	2009-2010	2007-2008	2008-2009	2009-2010	2007-2008	2008-2009	2009-2010
Program Area Total	9%	10%	11%	1,025	1,108	1,187	10,880	11,356	10,511
Non-traditional	9%	10%	11%	1,025	1,108	1,187	10,925	11,419	10,570
Displaced Homemaker	7%	9%	11%	26	43	56	360	460	508
Economically Disadvantaged	9%	9%	10%	579	609	699	6,592	6,752	6,767
Limited English Proficiency	7%	6%	5%	96	81	70	1,462	1,460	1,292
Single Parent	5%	6%	9%	48	59	87	915	1,016	1,017
Students with Disabilities	11%	12%	12%	121	137	127	1,089	1,136	1,063