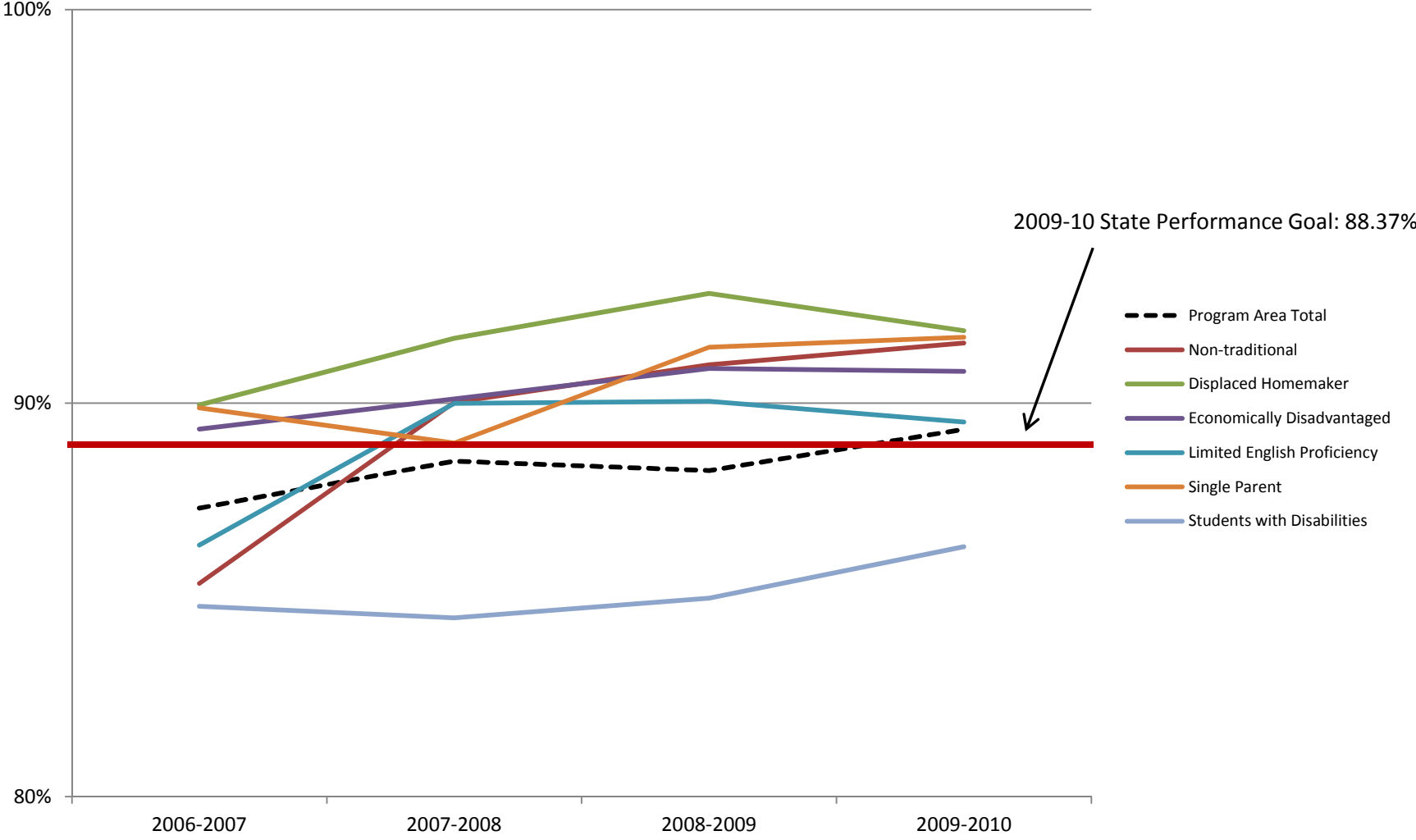




# TOP 12 Health Planning Year 2012-13

**Perkins IV Core Indicator 1P1: TOP Code 12 – Health – All Colleges**  
**CTE concentrators earning a GPA of 2.0 or higher in CTE courses to assess technical skill attainment**



Data source: <http://reports.cccco.edu/Reports/Pages/Folder.aspx?ItemPath=%2fPERKINS+IV&ViewMode=List>

**Perkins IV Core Indicator 1P1: TOP Code 12 – Health – All Colleges**  
**CTE concentrators earning a GPA of 2.0 or higher in CTE courses to assess technical skill attainment**

	Percent				Count				Total			
	2006-2007	2007-2008	2008-2009	2009-2010	2006-2007	2007-2008	2008-2009	2009-2010	2006-2007	2007-2008	2008-2009	2009-2010
Program Area Total	87.33%	88.52%	88.29%	89.33%	28,828	29,853	31,555	31,734	33,011	33,723	35,741	35,523
Non-traditional	85.42%	90.02%	90.97%	91.52%	3,239	3,887	4,153	4,233	3,792	4,318	4,565	4,625
Displaced Homemaker	89.95%	91.64%	92.79%	91.84%	940	1,360	1,686	1,790	1,045	1,484	1,817	1,949
Economically Disadvantaged	89.34%	90.10%	90.88%	90.81%	15,177	15,815	17,441	19,120	16,988	17,552	19,191	21,056
Limited English Proficiency	86.39%	89.99%	90.05%	89.52%	1,441	1,268	1,393	1,315	1,668	1,409	1,547	1,469
Single Parent	89.88%	88.98%	91.42%	91.67%	2,424	2,884	3,261	3,357	2,697	3,241	3,567	3,662
Students with Disabilities	84.84%	84.54%	85.04%	86.35%	1,891	2,013	2,269	2,366	2,229	2,381	2,668	2,740

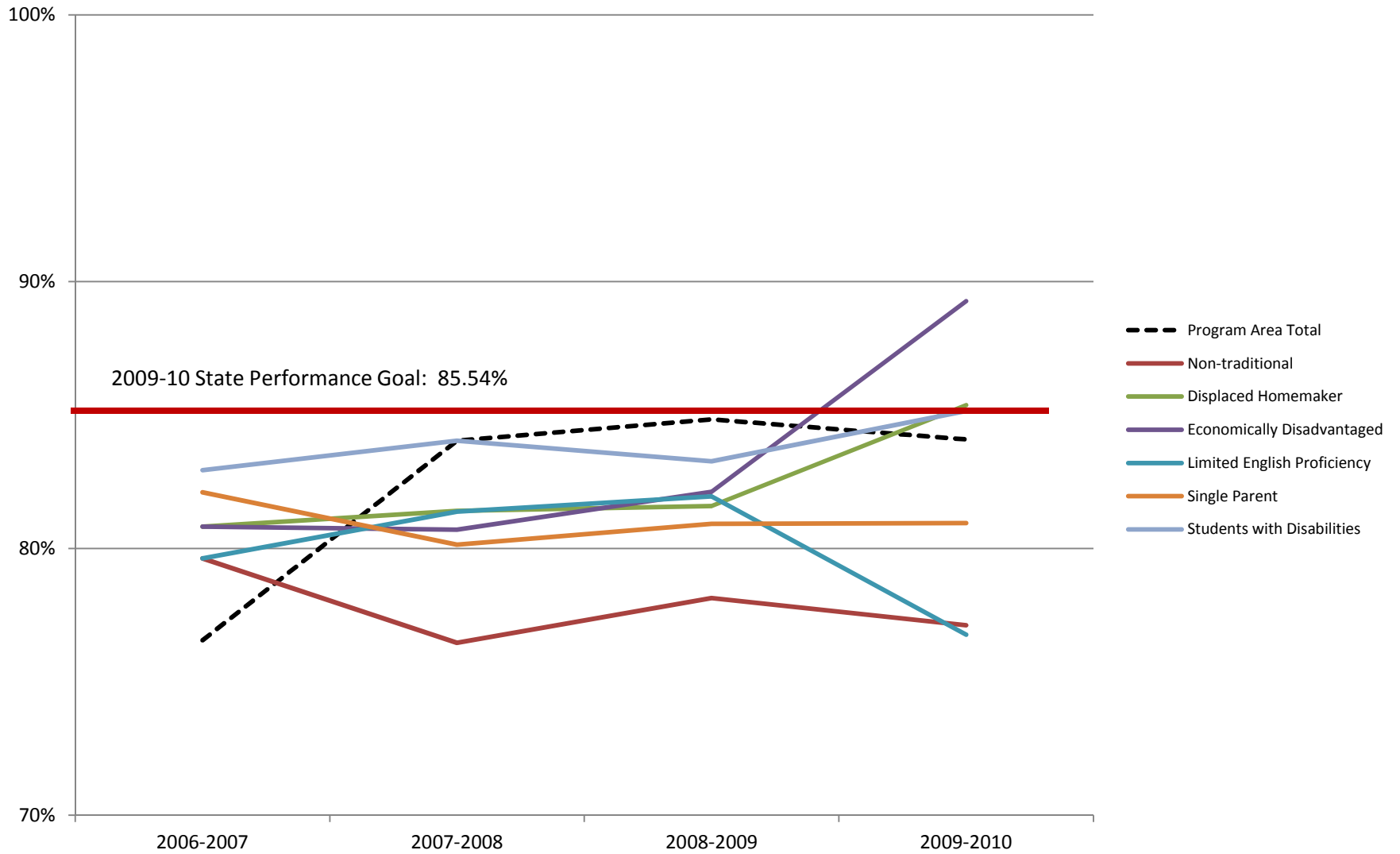


**Perkins IV Core Indicator 2P1: TOP Code 12 – Health – All Colleges**  
**"Leavers and Completer" concentrators who: 1) receive a degree, certificate, or equivalent;**  
**or 2) complete a transfer program and are classified as *Transfer Prepared***

	Percent				Count				Total			
	2006-2007	2007-2008	2008-2009	2009-2010	2006-2007	2007-2008	2008-2009	2009-2010	2006-2007	2007-2008	2008-2009	2009-2010
Program Area Total	95%	95%	96%	96%	20,601	21,038	22,610	22,029	21,683	22,071	23,553	23,019
Non-traditional	70%	95%	97%	96%	2,011	2,653	2,921	2,872	2,880	2,779	3,014	2,987
Displaced Homemaker	53%	96%	97%	96%	598	929	1,133	1,171	1,126	963	1,164	1,218
Economically Disadvantaged	91%	96%	97%	96%	11,123	11,258	12,369	13,276	12,263	11,757	12,813	13,771
Limited English Proficiency	41%	96%	96%	96%	394	937	1,045	983	950	975	1,087	1,023
Single Parent	76%	100%	100%	100%	1,727	2,075	2,268	2,243	2,263	2,075	2,268	2,243
Students with Disabilities	71%	97%	97%	96%	1,386	1,501	1,700	1,691	1,964	1,543	1,756	1,761

Perkins IV Core Indicator 3P1: TOP Code 12 – Health – All Colleges

Students who have successfully completed a minimum "threshold of 12 or more units of related coursework" in a CTE program area and who: 1) persisted in education at the community college level or 2) transferred to a four year institution



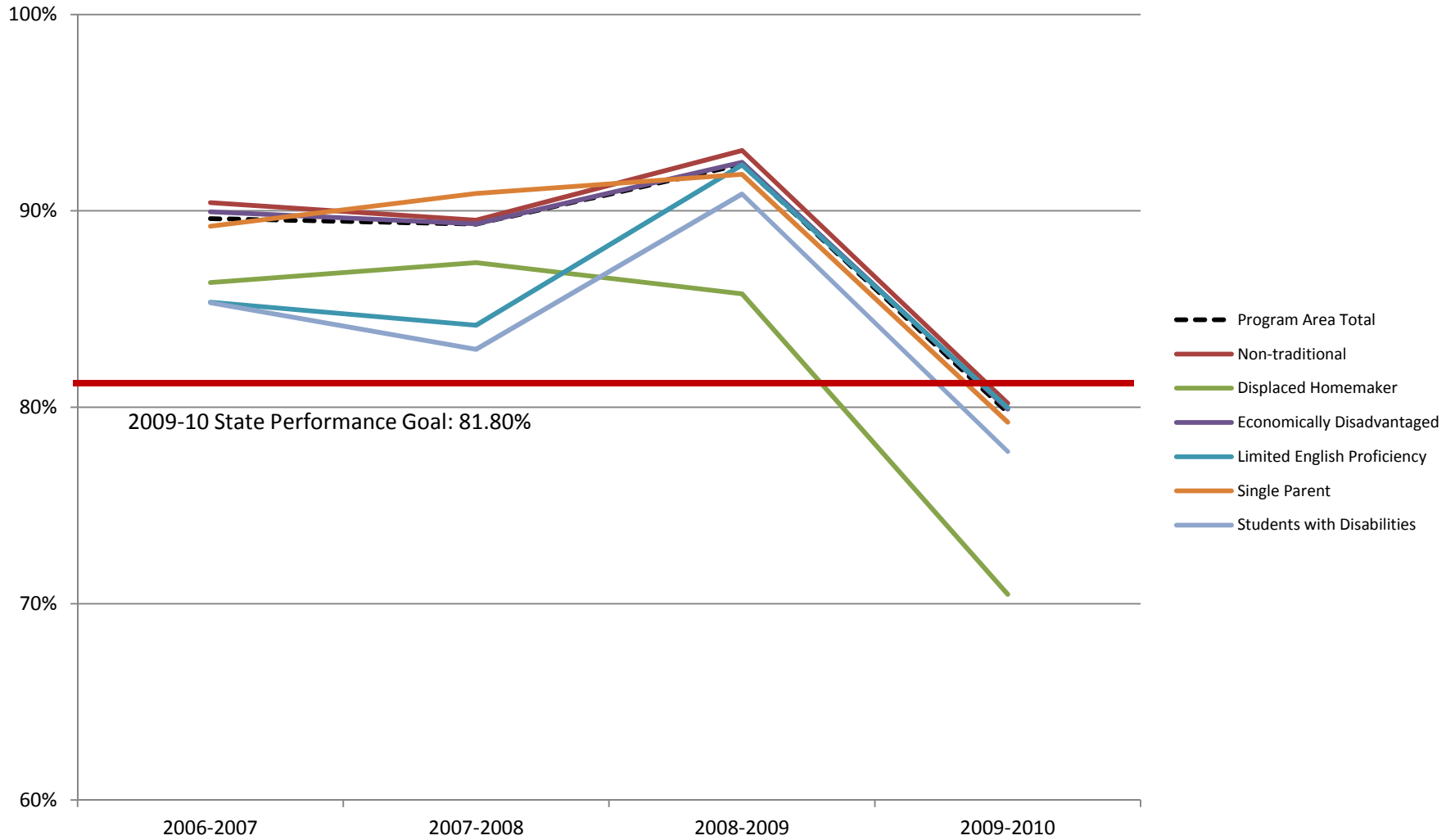
**Perkins IV Core Indicator 3P1: TOP Code 12 – Health – All Colleges**

**Students who have successfully completed a minimum "threshold of 12 or more units of related coursework" in a CTE program area and who: 1) persisted in education at the community college level or 2) transferred to a four year institution**

	Percent				Count				Total			
	2006-2007	2007-2008	2008-2009	2009-2010	2006-2007	2007-2008	2008-2009	2009-2010	2006-2007	2007-2008	2008-2009	2009-2010
Program Area Total	77%	84%	85%	84%	23,715	24,460	26,162	25,930	30,977	29,106	30,839	30,342
Non-traditional	80%	76%	78%	77%	2,782	3,129	3,367	3,323	3,494	4,092	4,309	4,354
Displaced Homemaker	81%	81%	82%	85%	771	1,143	1,405	1,470	954	1,404	1,722	1,838
Economically Disadvantaged	81%	81%	82%	89%	13,194	13,425	14,941	16,241	16,325	16,635	18,194	19,853
Limited English Proficiency	80%	81%	82%	77%	1,051	1,097	1,203	1,127	1,320	1,348	1,468	1,389
Single Parent	82%	80%	81%	81%	2,101	2,441	2,723	2,724	2,559	3,046	3,365	3,409
Students with Disabilities	83%	84%	83%	85%	1,734	1,890	2,075	2,122	2,091	2,249	2,492	2,562

### Perkins IV Core Indicator 4P1: TOP Code 12 – Health – All Colleges

The percentage of CTE program leavers and completers who did not transfer to a two or four year institution and were found during one of the four quarters following the cohort year in an apprenticeship program, UI covered employment, the federal Government, or the military



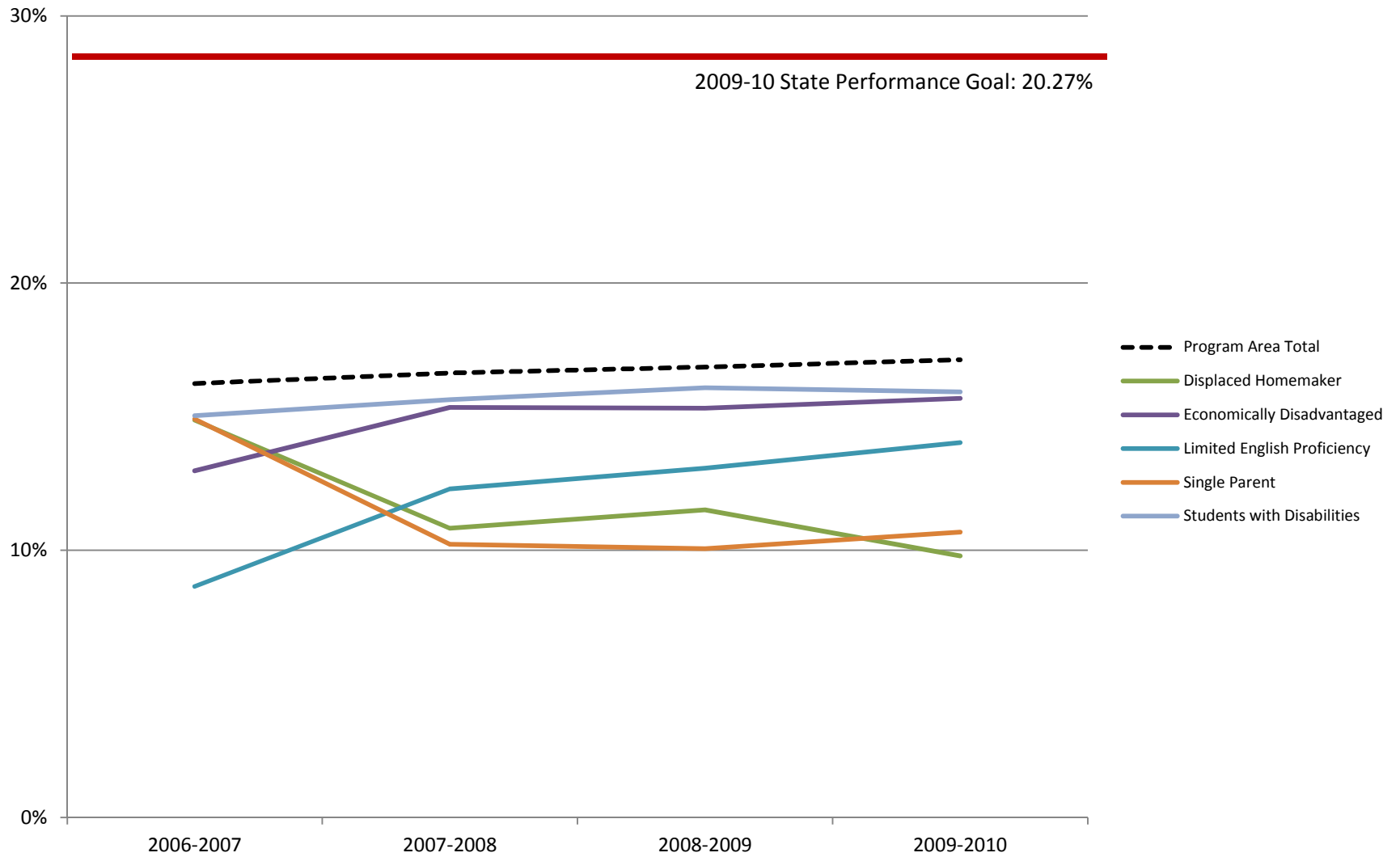


**Perkins IV Core Indicator 4P1: TOP Code 12 – Health – All Colleges**

**The percentage of CTE program leavers and completers who did not transfer to a two or four year institution and were found during one of the four quarters following the cohort year in an apprenticeship program, UI covered employment, the federal Government, or the military**

	Percent				Count				Total			
	2006-2007	2007-2008	2008-2009	2009-2010	2006-2007	2007-2008	2008-2009	2009-2010	2006-2007	2007-2008	2008-2009	2009-2010
Program Area Total	90%	89%	92%	80%	13,987	24,960	28,595	25,574	15,610	27,942	30,961	32,077
Non-traditional	90%	90%	93%	80%	1,302	1,640	1,827	1,657	1,440	1,832	1,963	2,066
Displaced Homemaker	86%	87%	86%	70%	354	532	651	604	410	609	759	857
Economically Disadvantaged	90%	89%	92%	80%	6,827	6,622	7,583	7,298	7,590	7,412	8,200	9,133
Limited English Proficiency	85%	84%	92%	80%	594	521	626	539	696	619	678	674
Single Parent	89%	91%	92%	79%	1,175	1,266	1,421	1,286	1,317	1,393	1,547	1,623
Students with Disabilities	85%	83%	91%	78%	814	812	1,074	936	954	979	1,182	1,204

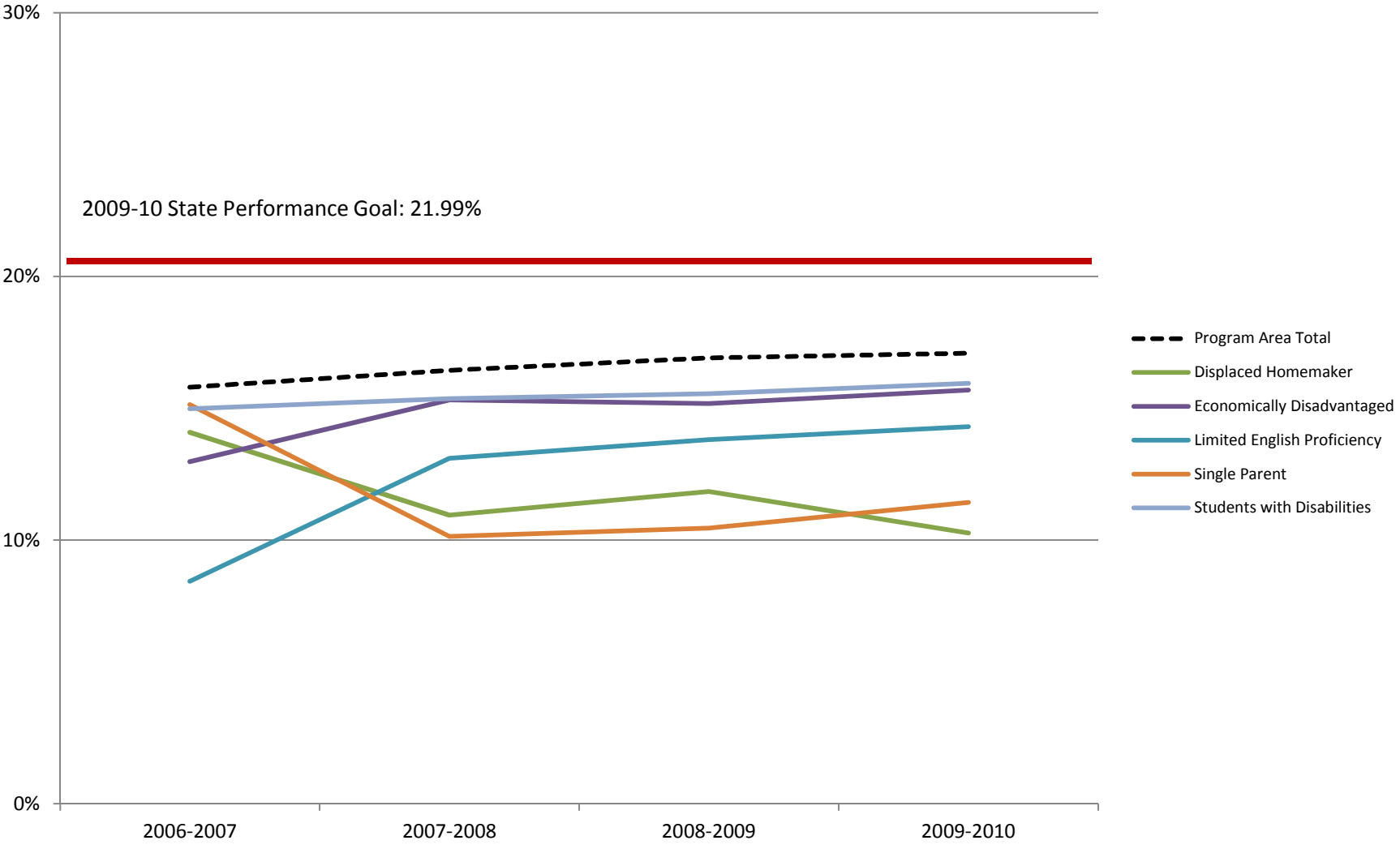
**Perkins IV Core Indicator 5P1: TOP Code 12 – Health – All Colleges**  
**Percent of underrepresented gender student concentrators participating in**  
**CTE coursework leading to employment in nontraditional occupations**



**Perkins IV Core Indicator 5P1: TOP Code 12 – Health – All Colleges**  
**Percent of underrepresented gender student concentrators participating in**  
**CTE coursework leading to employment in nontraditional occupations**

	Percent				Count				Total			
	2006-2007	2007-2008	2008-2009	2009-2010	2006-2007	2007-2008	2008-2009	2009-2010	2006-2007	2007-2008	2008-2009	2009-2010
Program Area Total	16%	17%	17%	17%	4,039	4,318	4565	4,626	24,875	25,954	27,083	27,001
Displaced Homemaker	15%	11%	12%	10%	2,023	139	180	164	13,598	1,284	1,564	1,675
Economically Disadvantaged	13%	15%	15%	16%	142	2,163	2343	2,618	1,094	14,095	15,295	16,685
Limited English Proficiency	9%	12%	13%	14%	203	135	159	157	2,347	1,098	1,216	1,119
Single Parent	15%	10%	10%	11%	267	284	307	327	1,790	2,776	3,052	3,062
Students with Disabilities	15%	16%	16%	16%	484	310	356	363	3,219	1,982	2,214	2,279

**Perkins IV Core Indicator 5P2: TOP Code 12 – Health – All Colleges**  
**Percent of nontraditional (underrepresented gender) student completers in CTE programs leading to non-traditional fields.**  
**Completion is defined as 1) receiving a degree, 2) completing a transfer program, 3) transferring to a two- or four-year institution, or 4) enlisting in the military**



**Perkins IV Core Indicator 5P2: TOP Code 12 – Health – All Colleges**

**Percent of nontraditional (underrepresented gender) student completers in CTE programs leading to non-traditional fields.  
Completion is defined as 1) receiving a degree, 2) completing a transfer program, 3) transferring to a two- or four-year institution, or 4) enlisting in the military**

	Percent				Count				Total			
	2006-2007	2007-2008	2008-2009	2009-2010	2006-2007	2007-2008	2008-2009	2009-2010	2006-2007	2007-2008	2008-2009	2009-2010
Program Area Total	16%	16%	17%	17%	2,533	2,795	3,047	2,972	16,039	17,004	18,021	17,395
Displaced Homemaker	14%	11%	12%	10%	1,273	90	119	106	9,037	822	1,005	1,033
Economically Disadvantaged	13%	15%	15%	16%	97	1,443	1,567	1,712	748	9,423	10,325	10,913
Limited English Proficiency	8%	13%	14%	14%	127	96	112	107	1,505	733	811	748
Single Parent	15%	10%	10%	11%	172	186	209	218	1,136	1,834	2,000	1,907
Students with Disabilities	15%	15%	16%	16%	335	202	228	236	2,237	1,315	1,466	1,480