

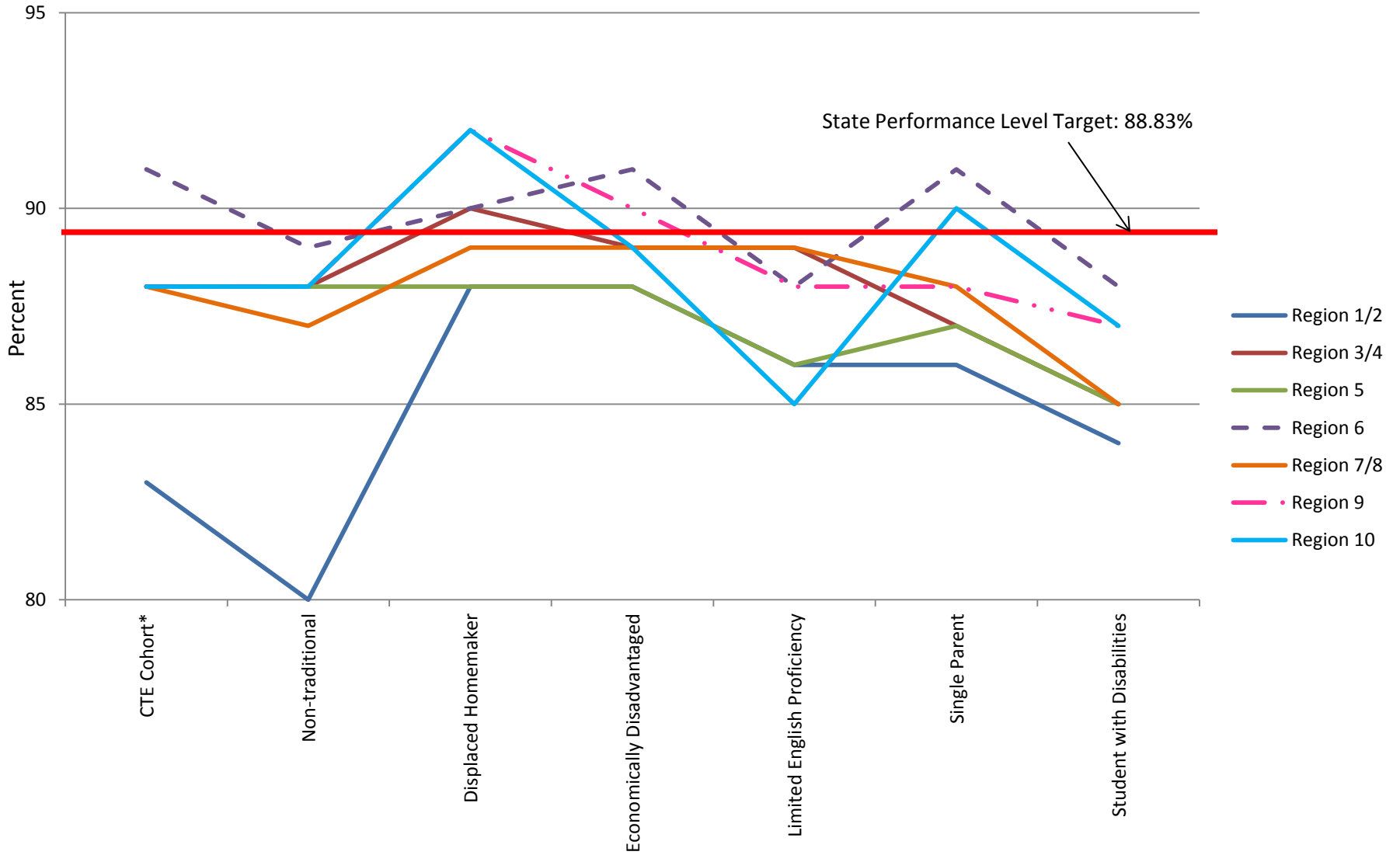


Core Indicator Performance Regional Comparison 2015-2016 Planning Year

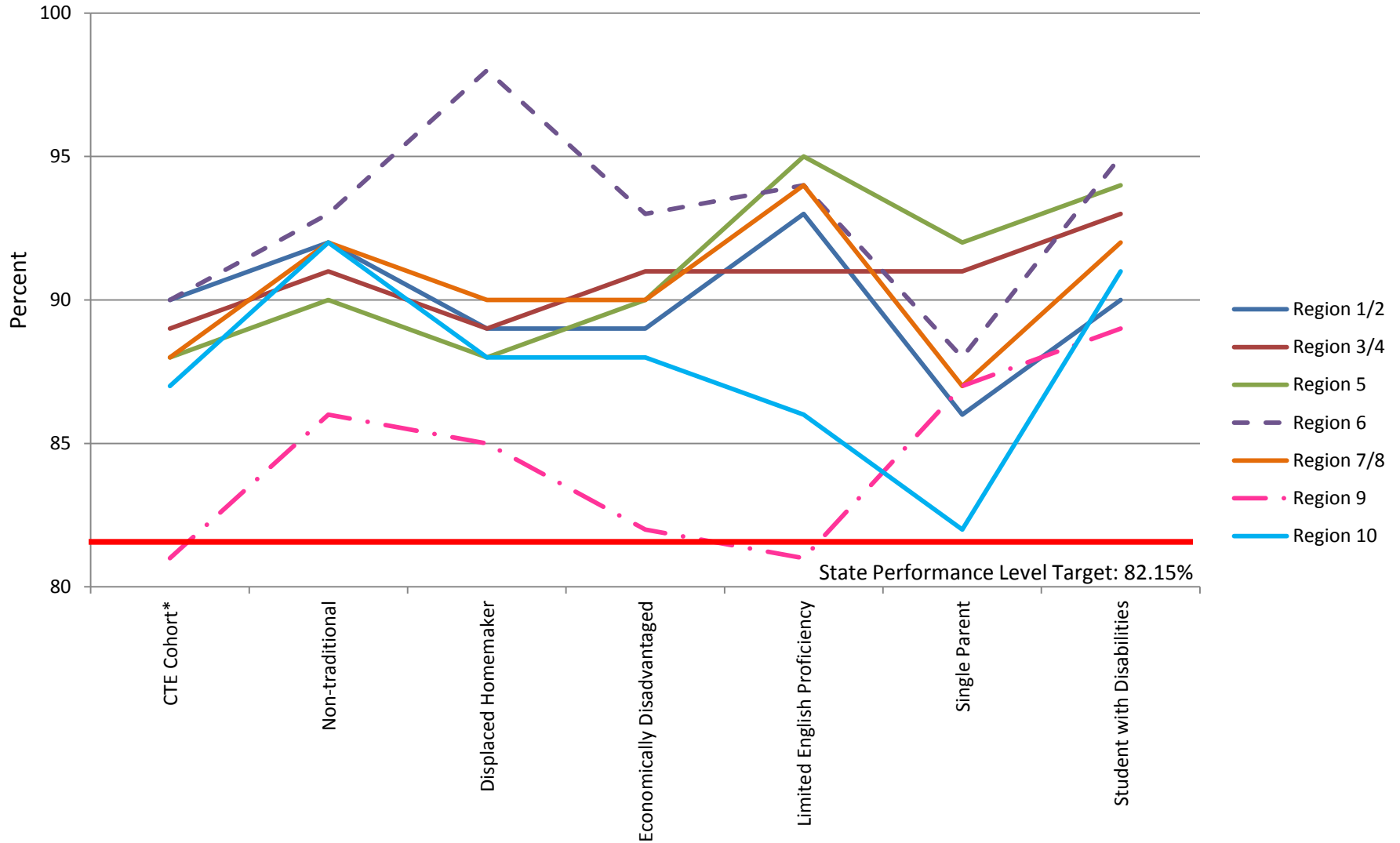
Source: https://misweb.cccco.edu/perkins/Core_Indicator_Reports/Default.aspx

Core Indicator 1: Skill Attainment - GPA 2.0 or Above

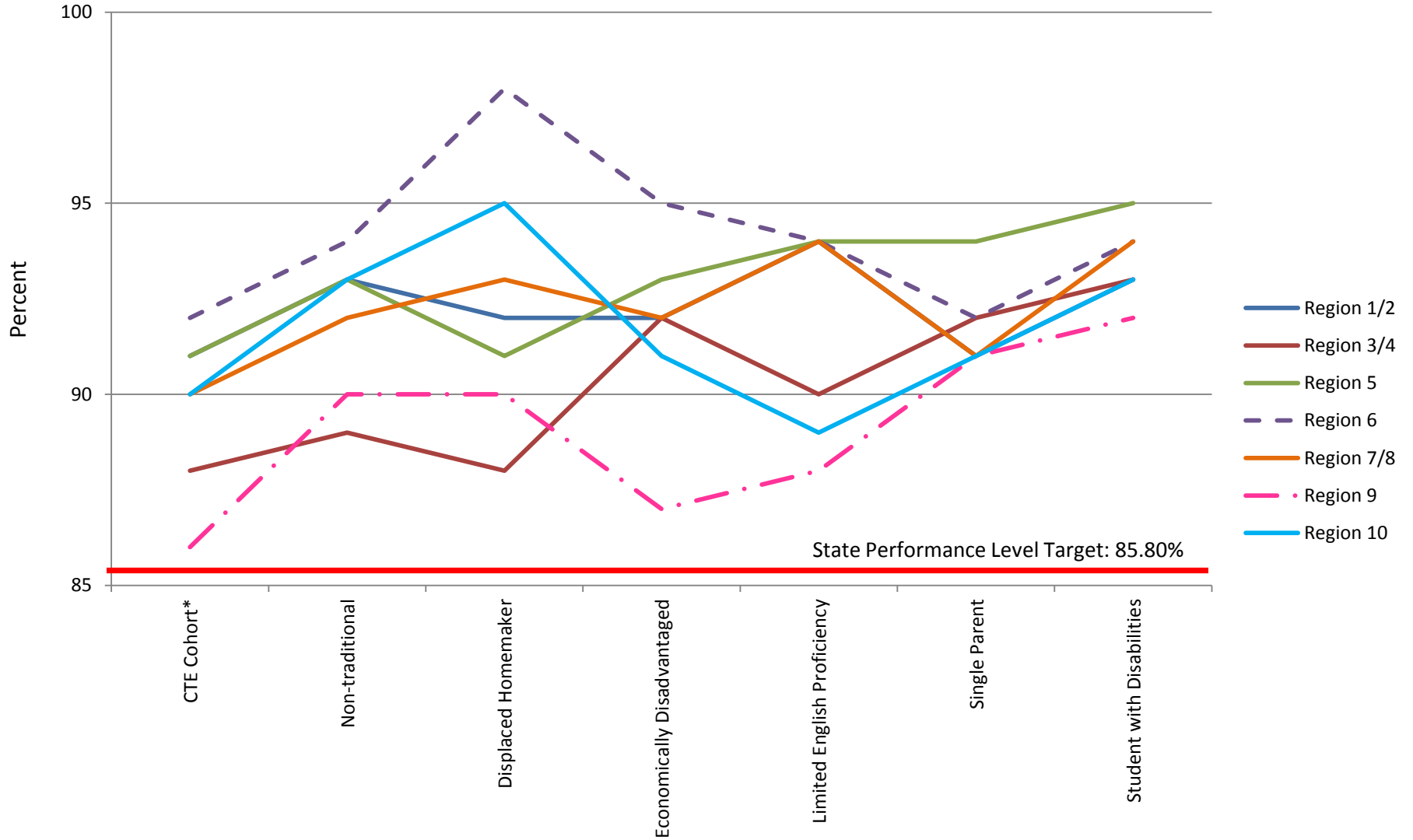
Planning Year 2015-2016



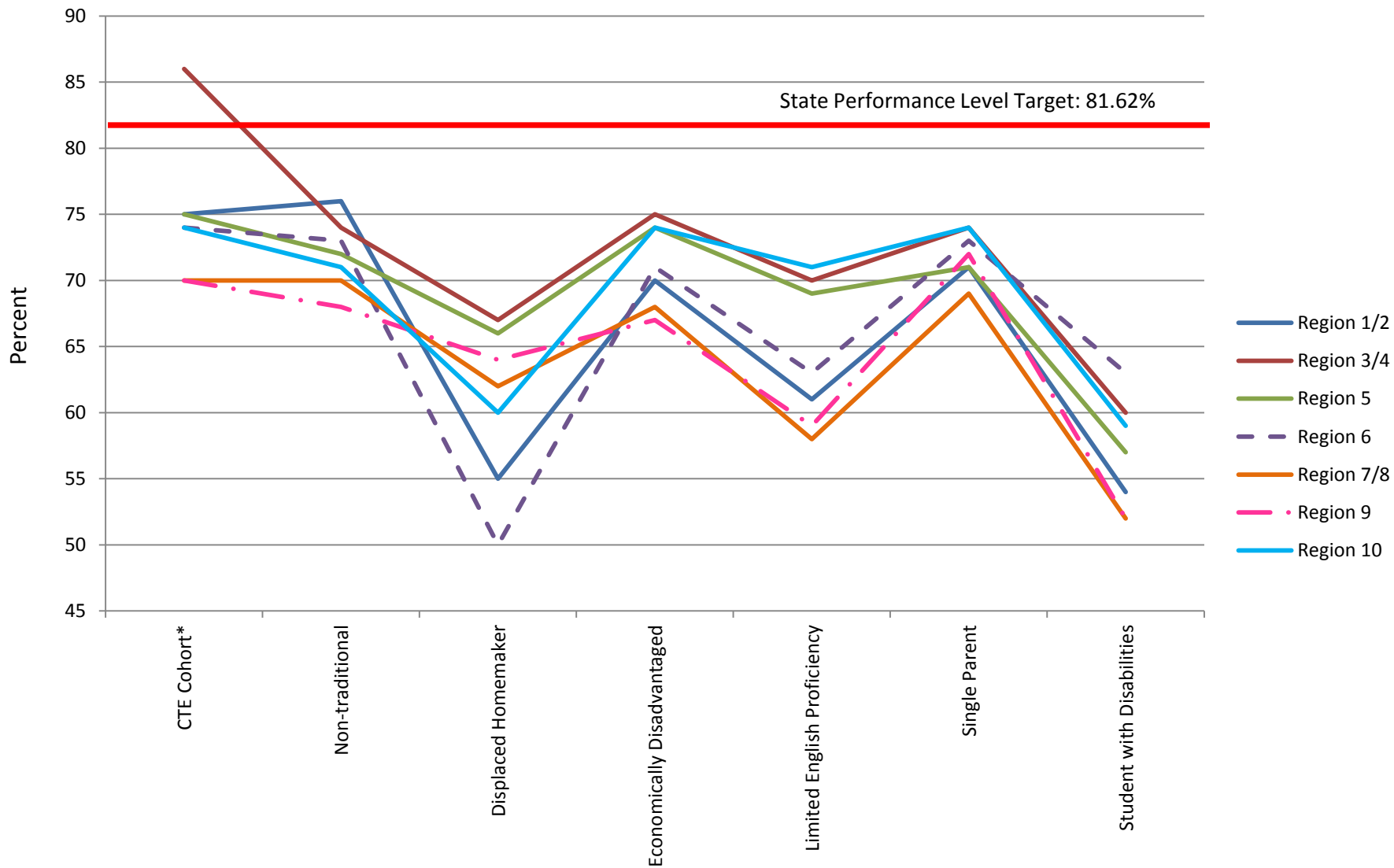
Core Indicator 2: Total Completions - Certifications, Degrees and Transfer Planning Year 2015-2016



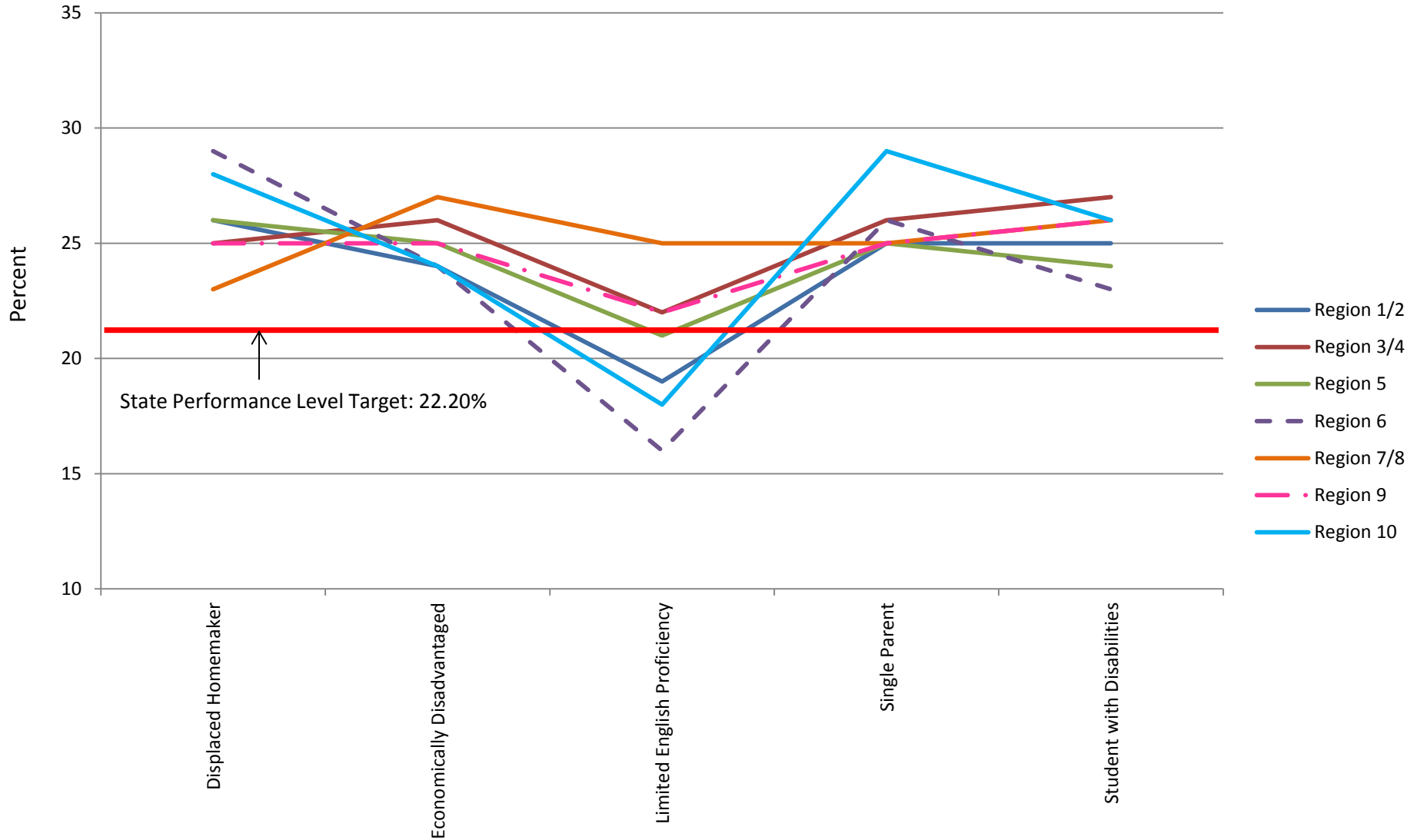
Core Indicator 3: Persistence and Transfer Planning Year 2015-2016



Core Indicator 4: Employment Planning Year 2015-2016



Core Indicator 5A: Non-Traditional Participation Planning Year 2015-2016



Core Indicator 5B: Non-Traditional Completion Planning Year 2015-2016

